

BOYD

10070-1
Ring Series Chandelier
10070 10074
10071
10073

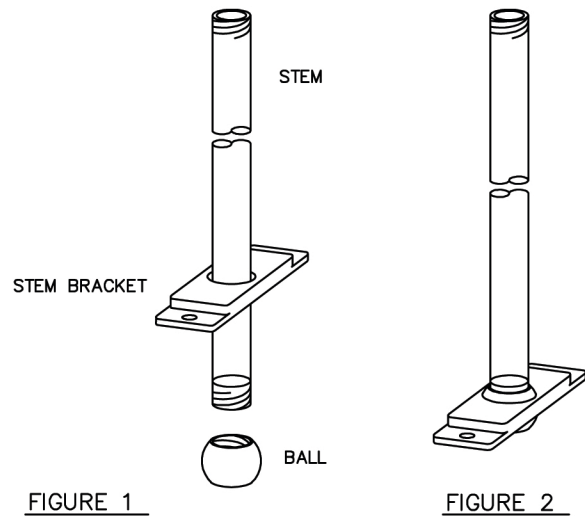


IMPORTANT: READ ALL INSTRUCTIONS THOROUGHLY BEFORE PROCEEDING.

CAUTION: TURN OFF POWER AT CIRCUIT BREAKER OR FUSE BOX BEFORE PROCEEDING.

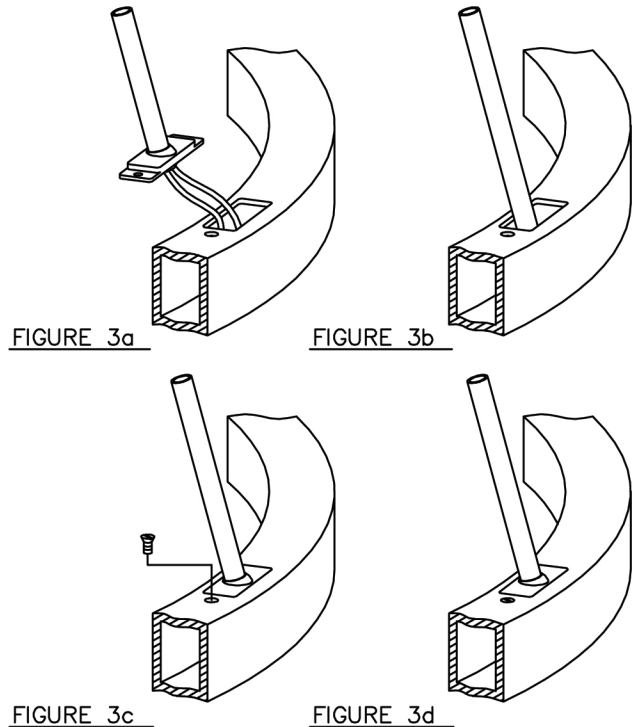
INSTALLATION: RING SERIES CHANDELIERS

1. CAREFULLY REMOVE FIXTURE FROM PACKAGING. TO AVOID DAMAGE, DO NOT USE A KNIFE OR OTHER SHARP INSTRUMENTS TO CUT THROUGH THE PACKAGING MATERIAL.

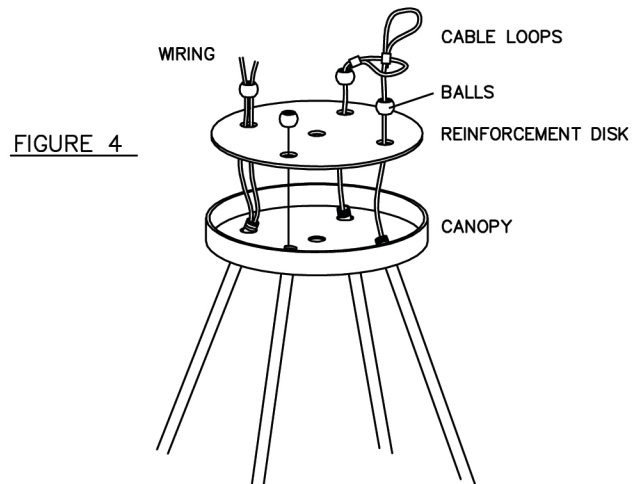


2. SLIDE A STEM BRACKET OVER THE END OF A STEM. THREAD A BALL ONTO SAME END OF STEM. (FIG 1) REPEAT THE SAME PROCESS FOR ALL FOUR STEMS SO THAT THEY LOOK IDENTICAL TO THE ASSEMBLY SHOWN IN FIGURE 2.

3. REST THE CHANDELIER RING ON A FLAT, PADDED SURFACE. IN THE SLOTS ON TOP OF THE CHANDELIER RING, FEED THE STEMS (AS SHOWN IN FIGURE 2) INTO THE RING. WITH THE STEM FULLY INSERTED INTO THE SLOT, PULL THE STEMS "UP" SO THAT BRACKETS "FILL" THE SLOTS. SECURE WITH THE SMALL FLAT HEAD SCREWS PROVIDED. NOTE THAT ONE OF THE SLOTS WILL SUPPLY WIRING AND TWO WILL SUPPLY SAFETY CABLES. (SEE FIGS. 3a - 3d)



4. SLIDE THE CANOPY AND THE REINFORCEMENT DISK OVER THE UPPER ENDS OF THE STEMS. SECURE BALLS ONTO STEMS. LOOP ONE CABLE OVER THE OTHER CABLE AS SHOWN BELOW.



5. LOOP THE SAFETY CABLE OVER THE CROSSBAR. ATTACH THE CROSSBAR TO THE CEILING OUTLET BOX USING THE MOUNTING SCREWS PROVIDED AS SHOWN BELOW.

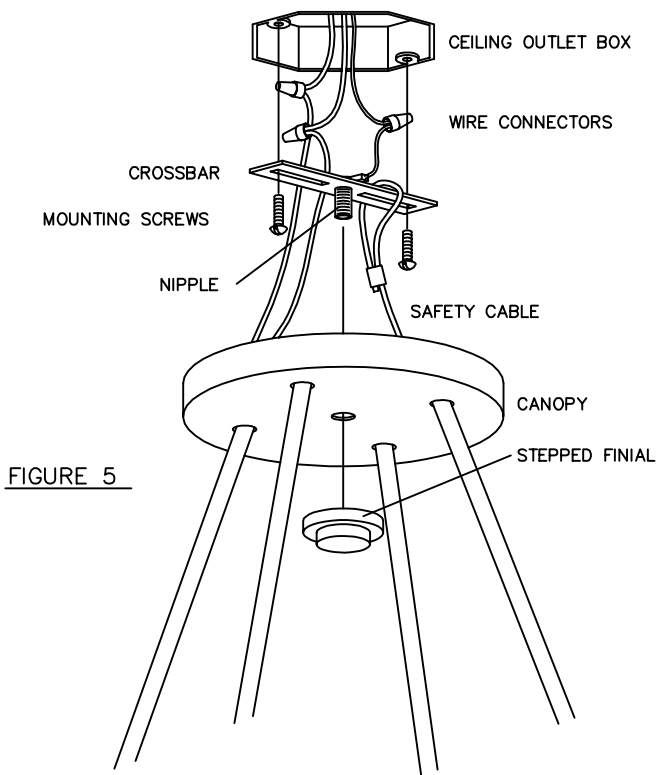


FIGURE 5

6. USING A SECOND PERSON FOR ASSISTANCE, HOLD THE CHANDELIER CLOSE TO THE OUTLET BOX. MAKE WIRE CONNECTIONS USING THE TWIST-ON WIRE CONNECTORS: CONNECT BLACK FIXTURE WIRE TO BLACK SUPPLY WIRE; WHITE FIXTURE WIRE TO WHITE SUPPLY WIRE; FIXTURE GROUND WIRE TO BOX GROUND WIRE OR TERMINAL. PUSH ALL CONNECTIONS INSIDE OUTLET BOX.

7. ALIGN THE CHANDELIER CANOPY HOLE WITH THE THREADED NIPPLE ON THE CROSSBAR. SECURE THE CHANDELIER TO THE CEILING BY THREADING THE STEPPED FINIAL ONTO NIPPLE.

8. DEPENDING ON THE STYLE OF YOUR CHANDELIER, PROCEED AS FOLLOWS:

FOR THE MERCURY I CHANDELIERS, INSERT XENON STYLE CANDELABRA LAMPS RATED FOR 20W.

SLIDE SAND-ETCHED GLASS SHADES INTO EACH FIXTURE ON THE RING.

FOR THE MERCURY II CHANDELIERS, PLACE THE LAMPSHADES OVER EACH FIXTURE AND SECURE WITH THE ROUND BRASS NUTS PROVIDED.

INSERT BLUNT-TIP STYLE CANDELABRA LAMPS RATED FOR 60W MAXIMUM.

FOR THE MILANO CHANDELIERS, INSERT BLUNT-TIP STYLE CANDELABRA LAMPS RATED FOR 60W.

CLIP LAMPSHADES ONTO CANDELABRA LAMPS.

9. ENJOY YOUR RING SERIES CHANDELIER BY BOYD LIGHTING COMPANY.

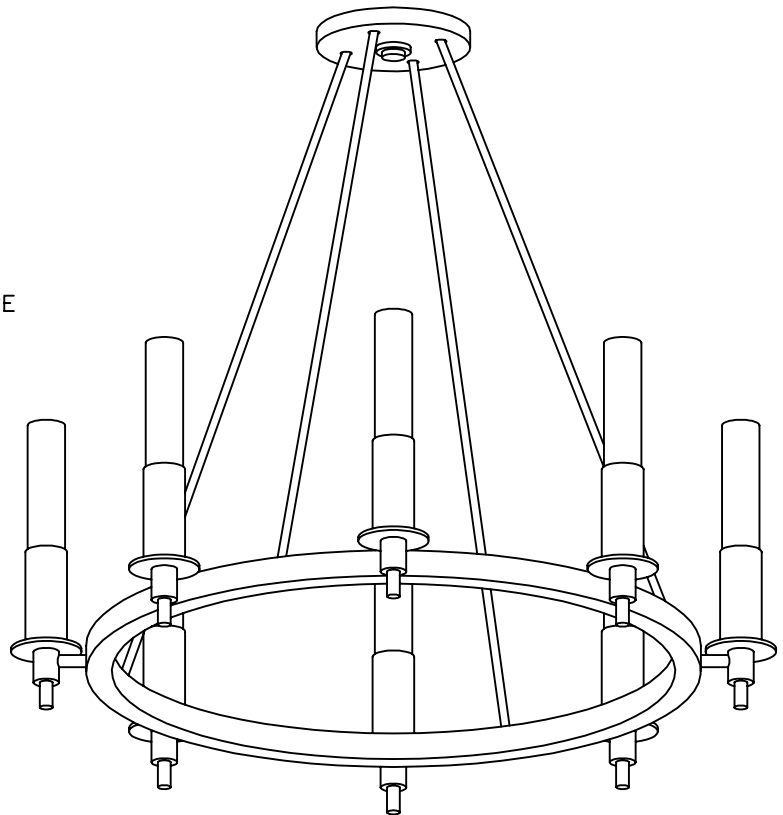


FIGURE 7