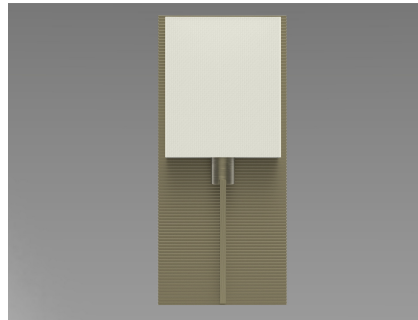


INSTALLATION INSTRUCTIONS

C-10682 Pisces Sconce



IMPORTANT!

AT ALL TIMES WIRING TO BE DONE PER NATIONAL ELECTRICAL CODES (NEC) OR APPLICABLE LOCAL CODES. READ ALL INSTRUCTIONS THOROUGHLY. TURN OFF POWER AT CIRCUIT BREAKER OR FUSE BOX BEFORE PROCEEDING.

STEP 1

- Carefully remove fixture from packaging. Avoid using a sharp blade on the packaging, as doing so may result in damage to the fixture, shade, or finish.

STEP 2

- Remove mounting plate from fixture. (Figure 1)
- To do so, loosen set screws (shown in red) at ends of the cast backplate.

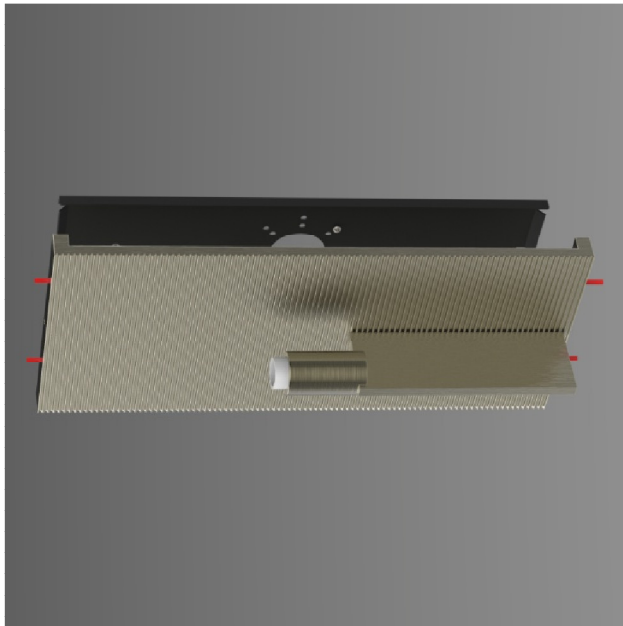


Figure 1



Figure 2

STEP 3

- Attach mounting plate to outlet box. Safety cable and the word "UP" should be at top. (Figure 2)
- Use secondary anchors at top and bottom of mounting plate. Electrician should select anchors suitable for the wall surface, and the anchors shown in the illustration may differ from those used.

STEP 4

- From safety cable and hook, hang fixture from middle hole on top of casting. (Figure 3)



Figure 3

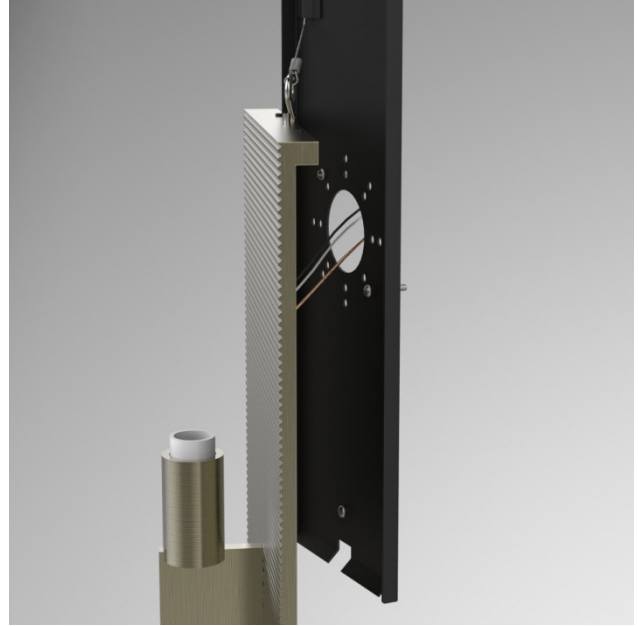


Figure 4

STEP 5

- Make wire connections using twist-on connectors. (Figure 4)
- Connect the white fixture lead to the neutral supply wire (typically white).
- Connect the black fixture lead to the hot supply wire (typically black).
- Connect the copper fixture wire to the ground wire or ground terminal in the outlet box.
- Push all connections inside the outlet box.

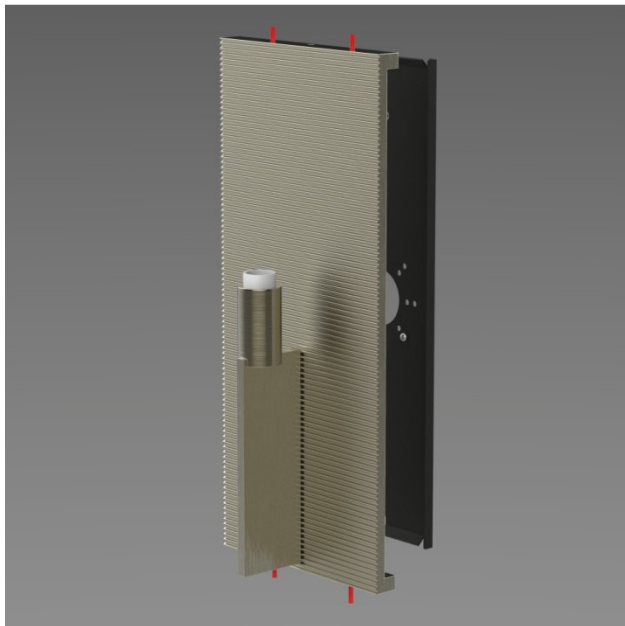


Figure 5



Figure 6

STEP 6

- With fixture wired, carefully remove hook and align fixture over mounting plate. (Figure 5)
- Secure fixture to wall by re-tightening the set screws on the cast backplate.

STEP 7

- Install shade onto fixture. (Figure 6)
- Slide shade "spider" over lamp socket. Secure in place with threaded plastic collar.



Figure 7

STEP 8

- Install lamp into socket. (Figure 7)
- See fixture label for maximum wattage rating.