



E-20125-28 Exterior Lantern

Lamping Specifications

Incandescent:

- One, A-21, 150w max each

Fluorescent:

- 120v, One, CFTR26W/GX24q
- 277v, One, CFTR26W/GX24q

IMPORTANT! AT ALL TIMES WIRING TO BE DONE PER NATIONAL ELECTRIC CODES (NEC) OR APPLICABLE LOCAL CODES

**IMPORTANT | CAUTION
READ ALL INSTRUCTIONS THOROUGHLY.
TURN OFF POWER AT CIRCUIT BREAKER OR
FUSE BOX BEFORE PROCEEDING.**

Step 1 Carefully remove fixture from packaging. Avoid using sharp blade on packaging as it may damage the finish or the glass shade.

Step 2 Route the wires from the fixture assembly up and through the stem and canopy assembly and fasten the stem assembly onto the fixture housing. (See Figure 1)

Caution: Injury to persons and damage to property may result if the fixture or mounting hardware is pulled from the ceiling. To reduce the likelihood of such injury, mount only on a surface that is mechanically sound to easily support 20 lbs. minimum (approximate fixture weight).

Step 3 Lift fixture up to the outlet box and thread screws through the mounting strap to attach the lantern to the outlet box. (See Figure 2)

IMPORTANT! AT ALL TIMES WIRING TO BE DONE PER NATIONAL ELECTRIC CODES (NEC) OR APPLICABLE LOCAL CODES.

Step 4 Make wire connections using twist-on connectors: connect the black fixture wire to the hot supply wire (typically black); connect the white fixture wire to the neutral supply wire (typically white); connect the copper fixture wire to the ground wire or ground terminal at the outlet box.

Step 5 Carefully slide the canopy up stem and set flush with ceiling. (See Figure 3)

Step 6 Secure the canopy in place with the decorative threaded ring. (See Figure 4)

Step 7 Carefully remove the protective cardboard strips from the glass as these are solely for shipping purposes.

Step 8 Install lamps per recommended label lamping.

Step 9 Restore power to circuit and confirm proper installation.

NOTE TO INSTALLER: For unlacquered satin copper finishes please wear white cotton gloves (included in packaging) when handling fixture to prevent finger prints, which will tarnish the finish on the metal components.

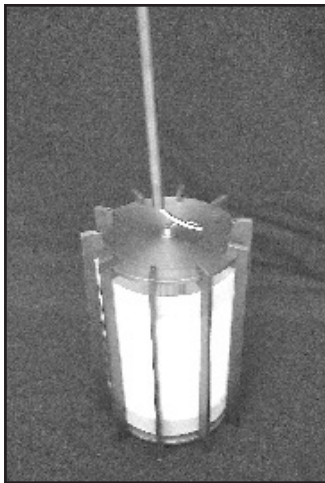


Figure 1



Figure 3



Figure 2



Figure 4



E-20131
Premier, Lantern Grande

Lamping Specifications

Incandescent

- One, A-21, 150w max each

Fluorescent:

- 120v, One, CFTR26,32,42W/GX24q
- 277v, One, CFTR26,32,42W/GX24q

IMPORTANT! AT ALL TIMES WIRING TO BE DONE PER NATIONAL ELECTRIC CODES (NEC) OR APPLICABLE LOCAL CODES

**IMPORTANT | CAUTION
READ ALL INSTRUCTIONS THOROUGHLY.
TURN OFF POWER AT CIRCUIT BREAKER OR
FUSE BOX BEFORE PROCEEDING.**

Step 1 Carefully remove fixture from packaging. Avoid using sharp blade on packaging as it may damage the finish or the glass shade.

Step 2 Route the fixture assembly wires through the stem and canopy assembly and fasten the stem assembly onto the fixture housing. (See Figure 1)

Caution: Injury to persons and damage to property may result if the fixture or mounting hardware is pulled from the ceiling. To reduce the likelihood of such injury, mount only on a surface that is mechanically sound to easily support 40 lbs. min (approximate fixture weight).

Step 3 Lift fixture up to the outlet box and thread screws through the mounting strap to attach the lantern to the outlet box. (See Figure 2)

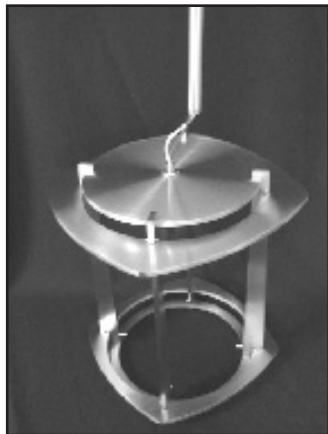


Figure 1

IMPORTANT! AT ALL TIMES WIRING TO BE DONE PER NATIONAL ELECTRIC CODES (NEC) OR APPLICABLE LOCAL CODES.

Step 4 Make wire connections using twist-on connectors: connect the black fixture wire to the hot supply wire (typically black); connect the white fixture wire to the neutral supply wire (typically white); connect the copper fixture wire to the ground wire or ground terminal at the outlet box.

Step 5 Carefully slide the canopy up stem and set flush with ceiling. (See Figure 3)

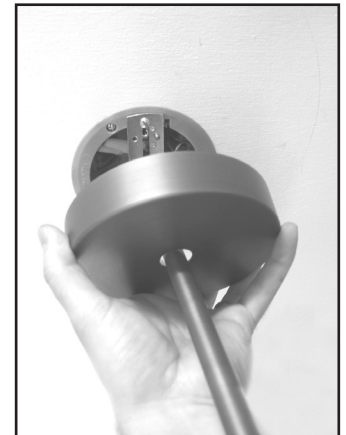


Figure 3

Step 6 Secure the canopy in place with the decorative threaded ring. (See Figure 4)



Figure 4

Step 7 Remove the knobs from the lower decorative ring and slide the glass cylinder into the fixture housing. Use care not to scratch the glass cylinder during installation. Securely re-install the knobs into the lower decorative ring so as to retain the glass cylinder into the fixture housing. (See Figure 5)

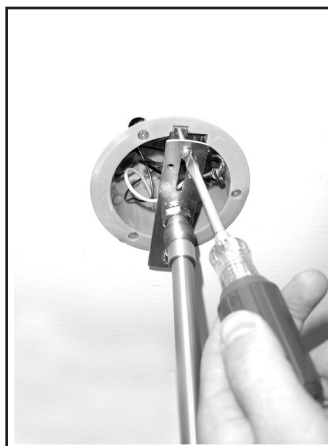


Figure 2

Step 8 Install lamps per recommended label lamping.

Step 9 Restore power to circuit and confirm proper installation.

NOTE TO INSTALLER: For unlacquered satin copper finishes please wear white cotton gloves (included in packaging) when handling fixture to prevent finger prints, which will tarnish the finish on the metal components.



Figure 5