



## INSTALLATION INSTRUCTIONS

- C-10701 Ghost Pendant Rectangle
- C-10702 Ghost Pendant 36"
- C-10703 Ghost Pendant 48"



### IMPORTANT!

AT ALL TIMES WIRING TO BE DONE PER NATIONAL ELECTRICAL CODES (NEC) OR APPLICABLE LOCAL CODES. READ ALL INSTRUCTIONS THOROUGHLY. TURN OFF POWER AT CIRCUIT BREAKER OR FUSE BOX BEFORE PROCEEDING.

#### STEP 1

- Carefully remove fixture from packaging. Avoid using a sharp blade on the packaging, as doing so may result in damage to the fixture or finish. Leave protective film on acrylic lens, as removing it prematurely may lead to unnecessary scratching during installation.

#### STEP 2

- Turn off power at fuse box or circuit breaker.

#### STEP 3

- Remove knob(s) from canopy. Separate the mounting bracket from canopy. (Figure 1)



Figure 1

#### STEP 4

- Install mounting bracket onto ceiling electrical box with screws provided. (Figure 2)

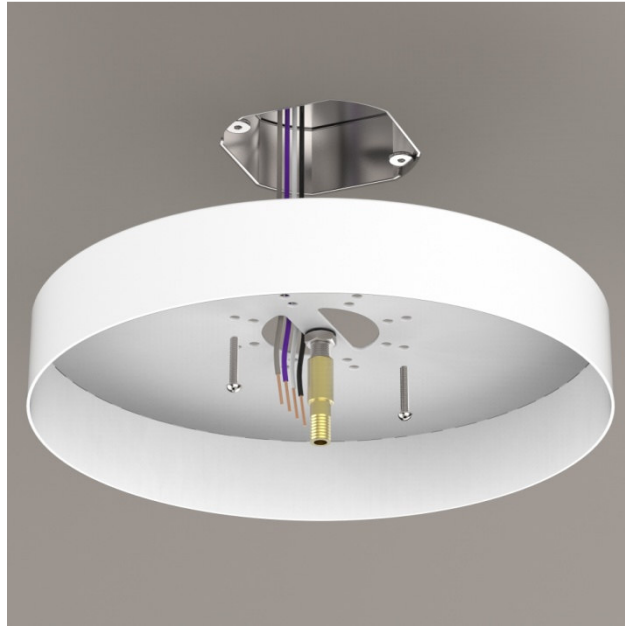


Figure 2

#### STEP 5

- Make main wire connections using included orange twist-on connectors. (Figure 3)
- Connect the white fixture lead to the neutral supply wire (typically white).
- Connect the black fixture lead to the hot supply wire (typically black).
- Connect the copper fixture wire to the ground wire or ground terminal in the outlet box.
- If installing on a 0-10V dimming system, connect the purple fixture wire to the purple supply wire.
- Connect the gray fixture wire to the gray supply wire.
- If dimming is not required, cap purple and gray wires separately.

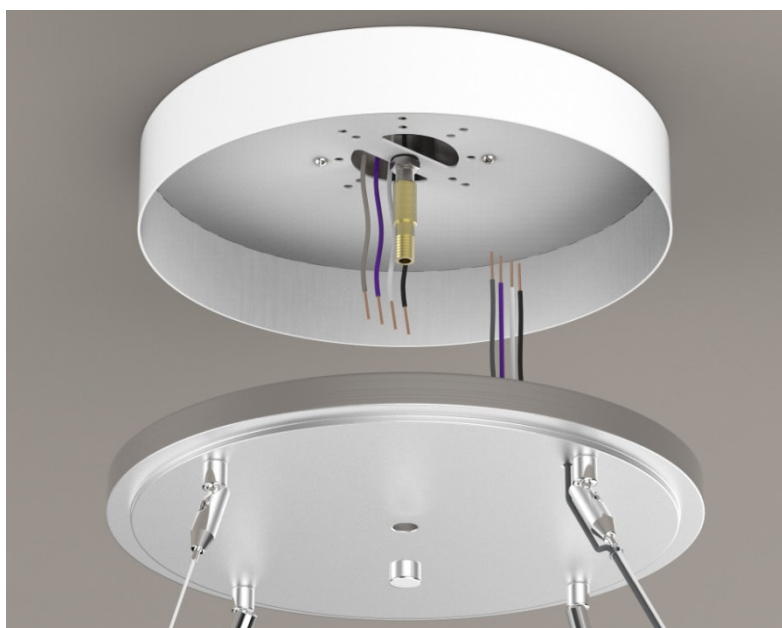


Figure 3

## STEP 6

- Push all connections back into outlet box.
- Secure canopy to mounting bracket by re-threading knob(s) onto canopy. (Figure 4)
- Allow fixture to hang freely from ceiling (Figure 5)



Figure 4



Figure 5

## STEP 7

- Once fixture stops moving, check to see that it is level. (Figure 6)
- If fixture needs adjustment, cables may be shortened or lengthened by pressing inward on the chrome cable grippers (shown in red). With end depressed, feed cable in or out. (Figure 7)
- Release cable gripper to lock cable securely in place.



Figure 6

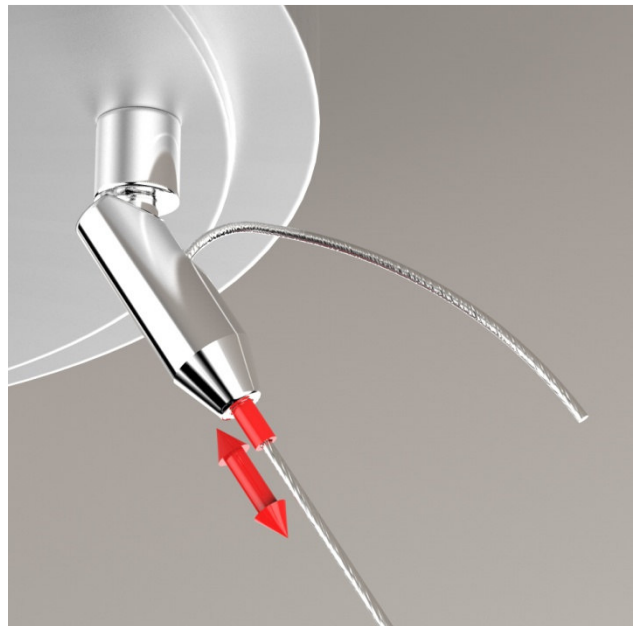


Figure 7

STEP 8

- After fixture has been leveled, snip off excess cable length. (Figure 8)
- Use a pair of wire cutters for this process.

STEP 9

- Slowly peel back protective film from both sides of acrylic lens. (Figure 9)
- Lens will initially hold a static charge, but this will dissipate over time. Dust with a very soft cloth.

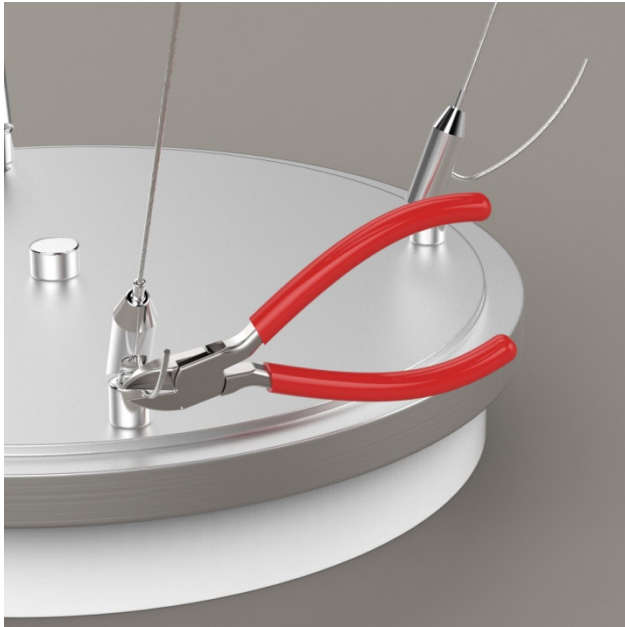


Figure 8

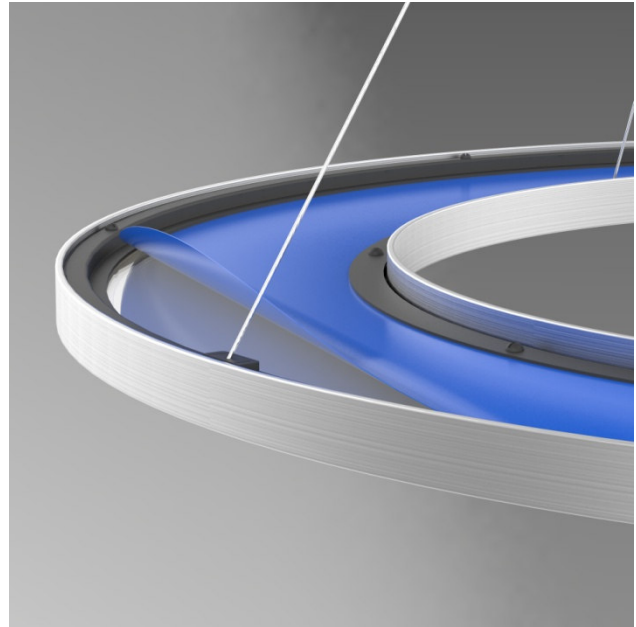


Figure 9

STEP 10

- Restore power to circuit. Turn on fixture.



Figure 10