



## INSTALLATION INSTRUCTIONS

C-10728      Loop Pendant 36"  
C-10729      Loop Pendant 48"

### IMPORTANT!

AT ALL TIMES WIRING TO BE DONE PER NATIONAL ELECTRICAL CODES (NEC) OR APPLICABLE LOCAL CODES. READ ALL INSTRUCTIONS THOROUGHLY. TURN OFF POWER AT CIRCUIT BREAKER OR FUSE BOX BEFORE PROCEEDING.

#### STEP 1

- Carefully remove fixture from packaging. Avoid using a sharp blade on the packaging, as doing so may result in damage to the fixture or finish. Glass shades are fragile so handle with care.

#### STEP 2

- Turn off power at fuse box or circuit breaker.

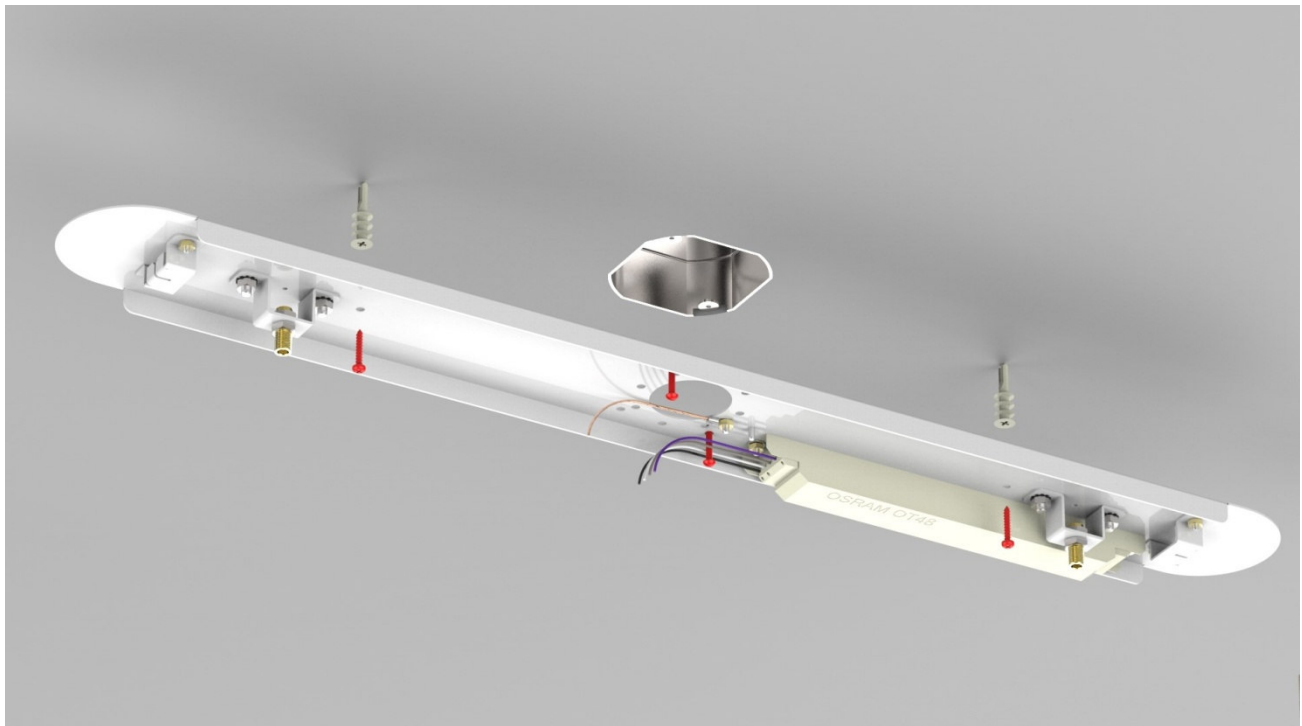


Figure 1

### STEP 3

- Install mounting plate onto ceiling electrical box with screws provided (shown red). (Figure 1)
- Due to length and weight of fixture, secondary anchors should be used on the ends.
- Electrician should use anchors appropriate for the load and specific ceiling type.
- Anchors may not match those shown in illustration.

### STEP 4

- With fixture assembly resting on a padded surface, thread stem to end coupling. (Figure 2)
- Note that one end of stem has more visible threading than the other. Use end with fewer threads.
- Feed LED wires through stem.
- Repeat process on second stem at opposite end.
- Slide canopy gently down both stems. Use care to avoid scratching. (Figure 3)
- Let canopy rest on top of fixture assembly.

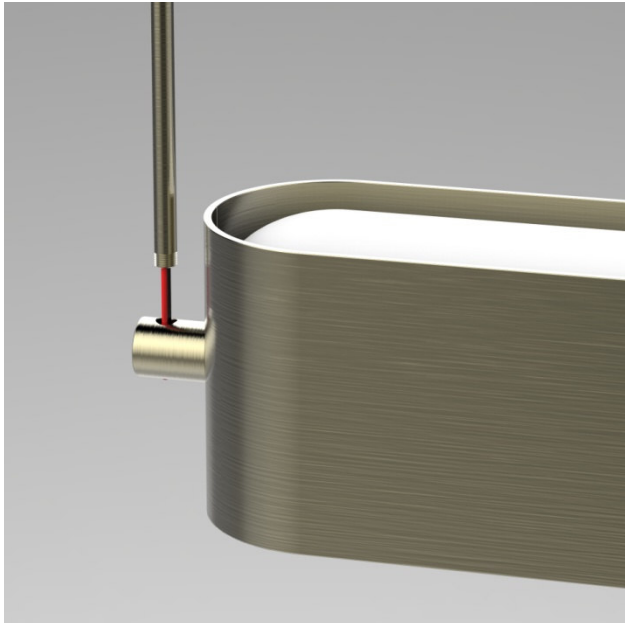


Figure 2

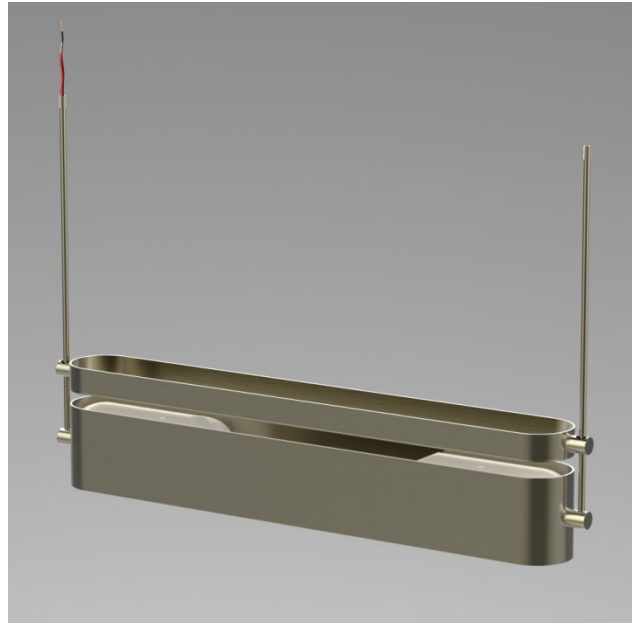


Figure 3

### STEP 5

- With canopy resting on fixture assembly, thread shouldered anchors to tops of stems. (Figure 4)
- Shouldered anchors should be threaded down at least 3/8" and must be consistent on both stems.
- Thread safety nuts onto tops of shouldered anchors.

### STEP 6

- Gently lay fixture on its side, on a padded surface.
- Slide canopy all the way up stems until it stops on shouldered anchors.
- Carefully feed stem wiring through couplings and into the inner canopy. (Figure 5)

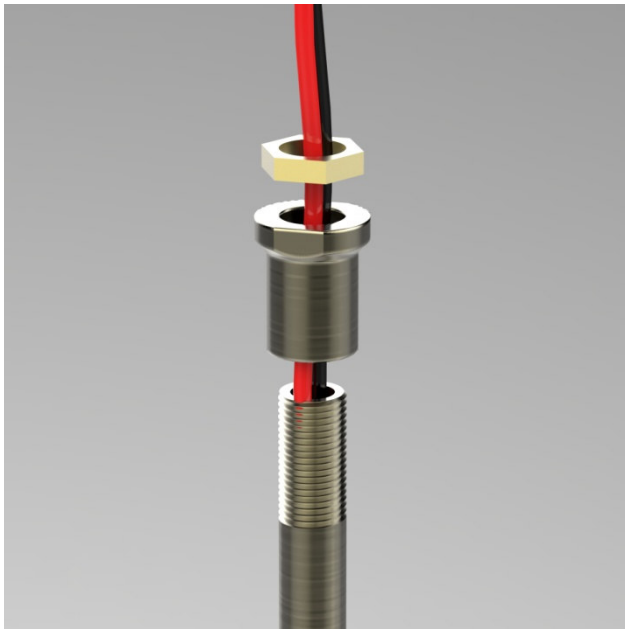


Figure 4

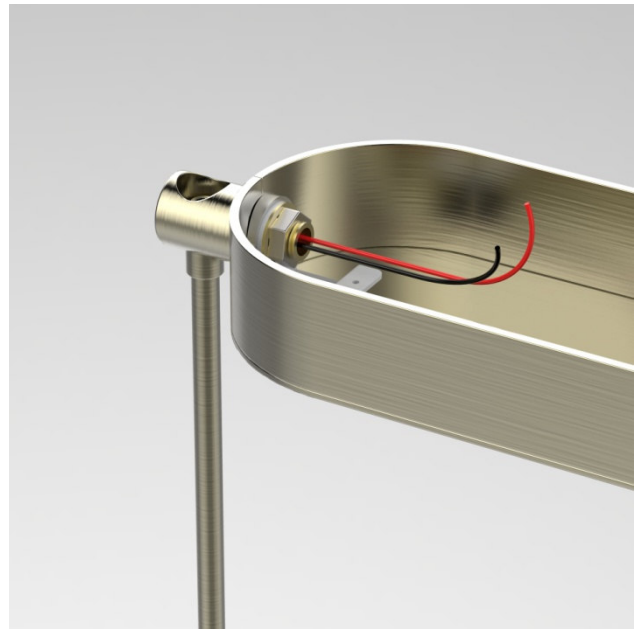


Figure 5

#### STEP 7

- Hook canopy support cables (shown red) onto mounting plate. (Figure 6)
- Feed barrel-end of cable into gap at top of support bracket (shown red). (Figure 7)
- Pull cables through slots and give a gentle tug to confirm hold.
- Repeat process for cable at opposite end of fixture.
- Allow fixture to freely hang from support cables.

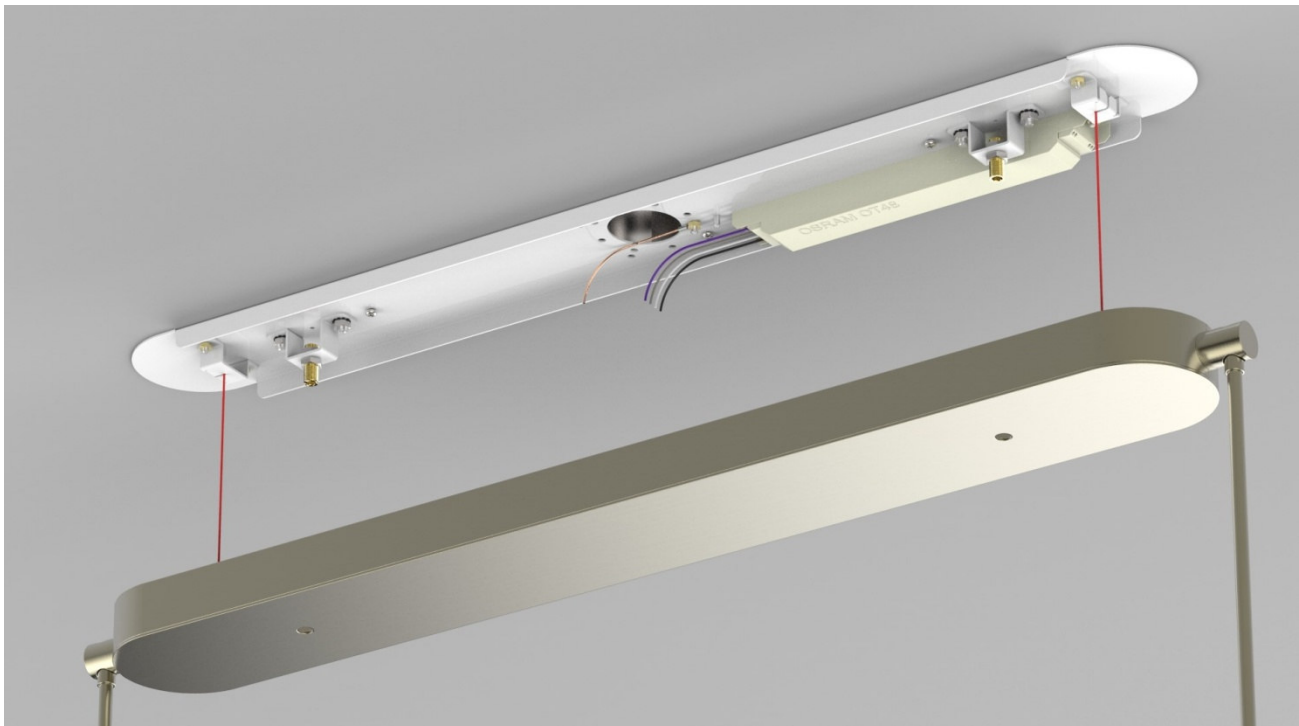


Figure 6

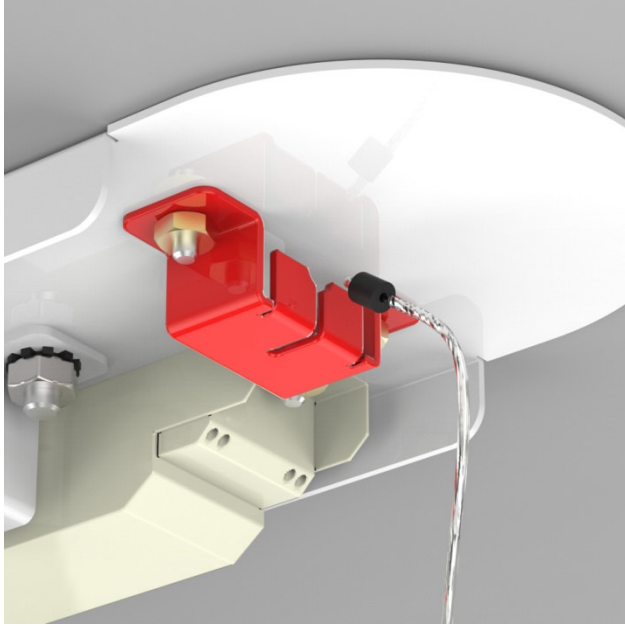


Figure 7

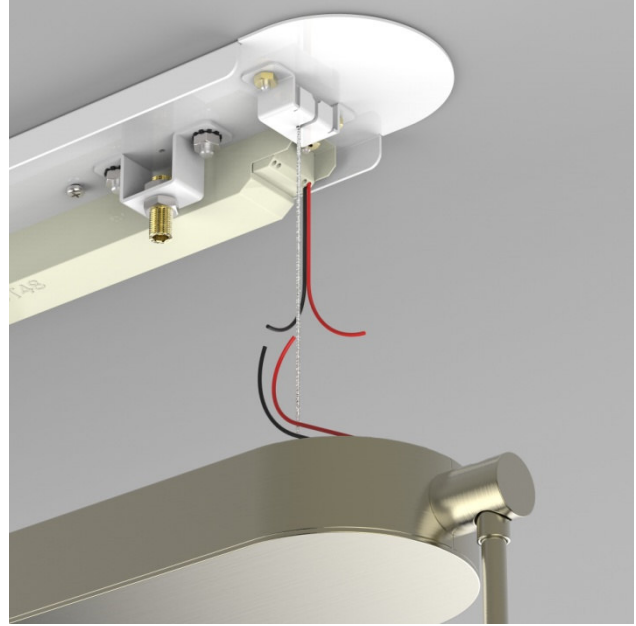


Figure 8

#### STEP 8

- Make LED wire connections. (Figure 8)
- Using connectors, connect RED (+) LED leads **from both ends of fixture** to red (+) driver wire.
- Connect BLACK (-) LED leads **from both ends of fixture** to black (-) driver wire.
- Tuck wires into canopy.

#### STEP 9

- Make main wire connections using included orange twist-on connectors. (Figure 9)
- Connect the white fixture lead to the neutral supply wire (typically white).
- Connect the black fixture lead to the hot supply wire (typically black).
- Connect the copper fixture wire to the ground wire or ground terminal in the outlet box.
- If installing on a 0-10V dimming system, connect the purple fixture wire to the purple supply wire.
- Connect the gray fixture wire to the gray supply wire.
- If dimming is not required, cap purple and gray wires separately.
- Push all connections inside the outlet box.

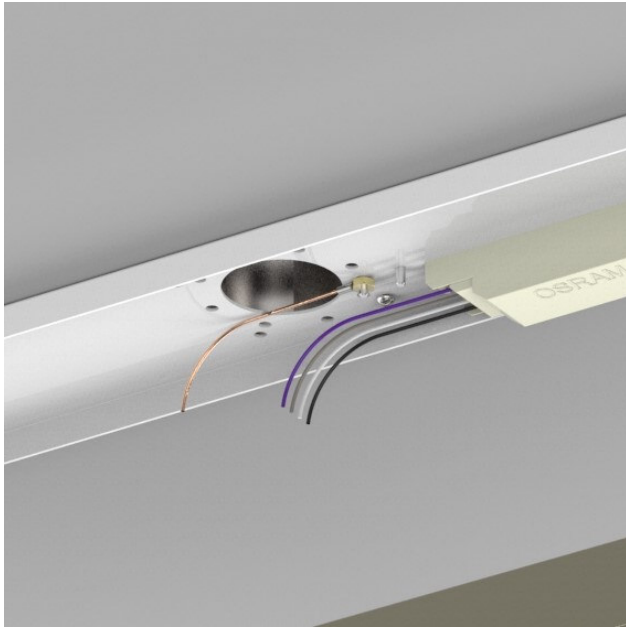


Figure 9



Figure 10



Figure 11

#### STEP 10

- Raise canopy toward ceiling plate. (Figure 10)
- Be sure no wires or cables are kinked or caught between canopy and mounting bracket.

#### STEP 11

- Secure fixture to ceiling by threading caps onto underside of canopy. (Figure 11)
- Restore power to circuit.
- If fixture does not function properly, check all connections and repeat process.