

## INSTALLATION INSTRUCTIONS

DA2010 Malmo Pendant

DA2014 Oslo Pendant



Figure 1



Figure 2

### IMPORTANT!

AT ALL TIMES WIRING TO BE DONE PER NATIONAL ELECTRICAL CODES (NEC) OR APPLICABLE LOCAL CODES. READ ALL INSTRUCTIONS THOROUGHLY. TURN OFF POWER AT CIRCUIT BREAKER OR FUSE BOX BEFORE PROCEEDING.

#### STEP 1

- Carefully remove fixture from packaging. Avoid using a sharp blade on the packaging, as doing so may result in damage to the fixture or finish. Glass shade is fragile so handle with care.

#### STEP 2

- Turn off power at fuse box or circuit breaker.

#### STEP 3

- With shade placed on padded surface, secure chain to glass.
- Loosen knobs from threaded studs. (Figure 1)
- Feed stud and bead chain from inside of glass. Secure with knobs on the outside. (Figure 2)

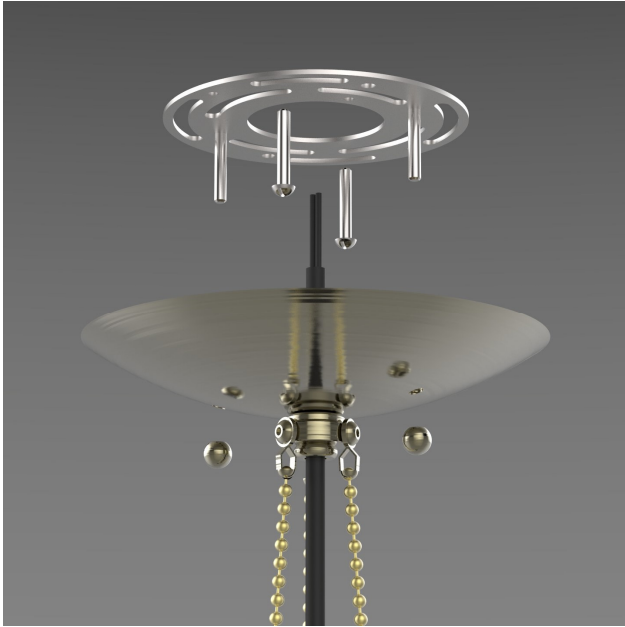


Figure 3



Figure 4

#### STEP 4

- Loosen decorative balls and remove from canopy. (Figure 3)
- Install mounting bracket to ceiling electrical box with provided screws.
- Be sure studs point downward.

#### STEP 5

- Make wire connections using included orange twist-on connectors. (Figure 3)
- Connect the white fixture lead to the neutral supply wire (typically white).
- Connect the black fixture lead to the hot supply wire (typically black).
- Connect the copper fixture wire to the ground wire or ground terminal in the outlet box.
- Push all connections inside the outlet box.

#### STEP 6

- Align canopy over studs on mounting bracket. (Figure 3)
- Secure fixture to ceiling with decorative balls as shown.

#### STEP 7

- Insert lamp into socket. (Figure 4)
- A medium based Type-A bulb is recommended.
- See fixture label for maximum wattage rating.