

INSTALLATION INSTRUCTIONS

DA2020 Magnus Sconce V

DA2022 Magnus Sconce

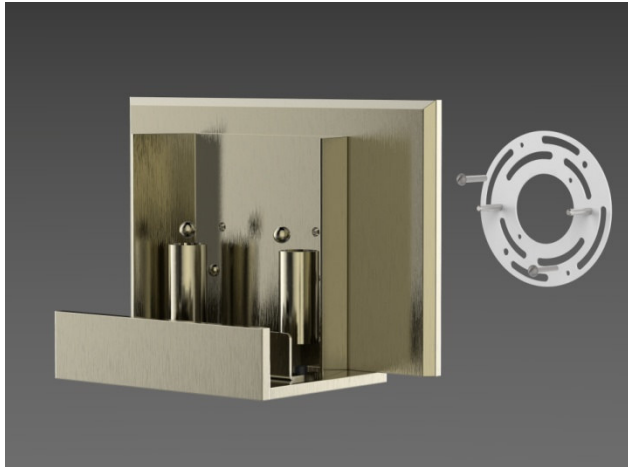
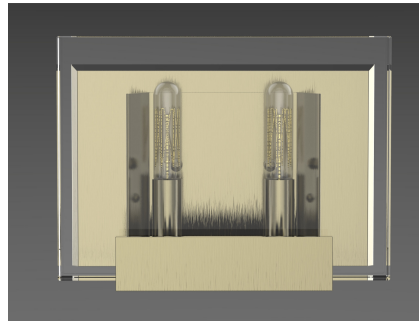


Figure 1



Figure 2

IMPORTANT!

AT ALL TIMES WIRING TO BE DONE PER NATIONAL ELECTRICAL CODES (NEC) OR APPLICABLE LOCAL CODES. READ ALL INSTRUCTIONS THOROUGHLY. TURN OFF POWER AT CIRCUIT BREAKER OR FUSE BOX BEFORE PROCEEDING.

STEP 1

- Carefully remove fixture from packaging. Avoid using a sharp blade on the packaging, as doing so may result in damage to the fixture or finish. Glass shade is fragile so handle with care.

STEP 2

- Turn off power at fuse box or circuit breaker.

STEP 3

- Set glass aside until later in these instructions.
- Remove decorative balls from front side of sconce. (Figure 1)
- Install mounting bracket to wall electrical box with the screws provided.
- Be sure mounting bracket studs are aligned horizontally, and are level.

STEP 4

- Make wire connections using included orange twist-on connectors.
- Connect the white fixture lead to the neutral supply wire (typically white).
- Connect the black fixture lead to the hot supply wire (typically black).
- Connect the copper fixture wire to the ground wire or ground terminal in the outlet box.
- Push all connections inside the outlet box.

STEP 5

- Align sconce over studs on mounting bracket. Secure to wall with decorative balls. (Figure 2)



Figure 3

STEP 6

- Insert lamps into sockets. (Figure 3)
- Candelabra based Type T-6 nostalgia bulbs are recommended.
- Do not exceed wattage rating as listed on relamp label. **Higher wattage lamps may lead to thermal shock and glass breakage.** Peel warning label from face of glass shade. (Figure 4)



Figure 4

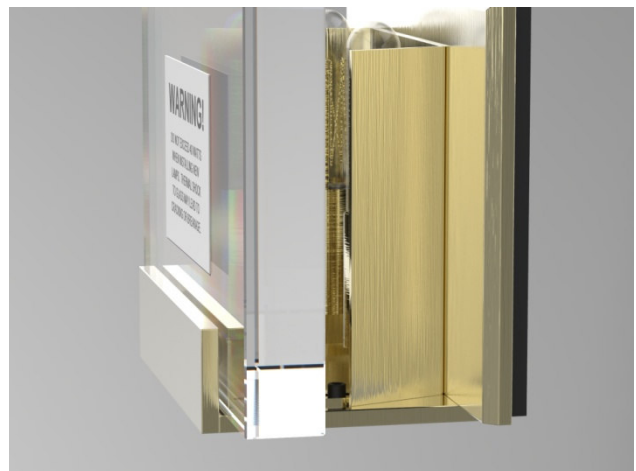


Figure 5

STEP 7

- Carefully place glass onto support platform. (Figure 4)
- Secure in place by tighten the screws directly behind glass, accessible with Allen wrench.