

## INSTALLATION INSTRUCTIONS

### DA2030 Ava Sconce

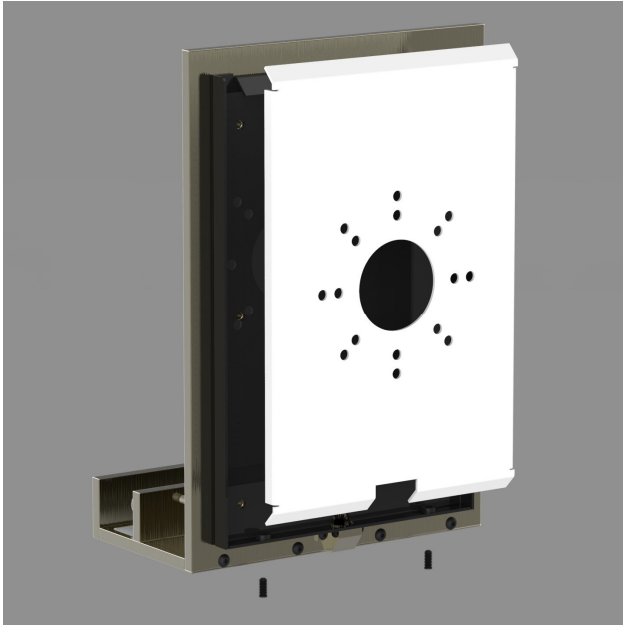


Figure 1

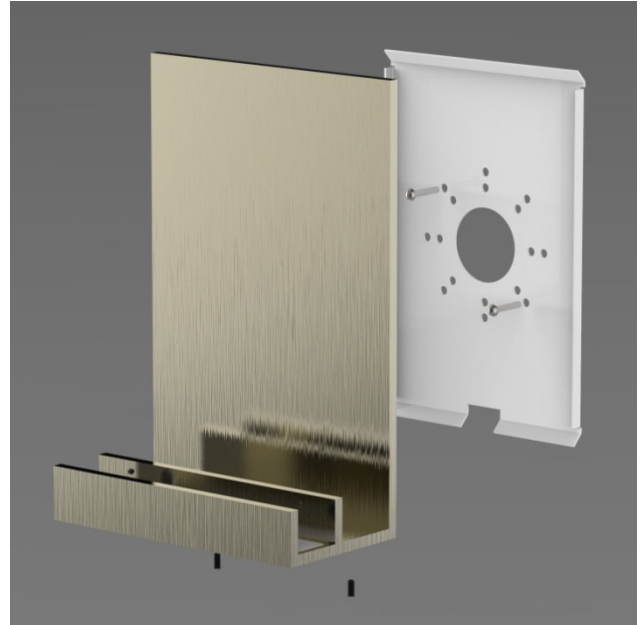


Figure 2

#### IMPORTANT!

AT ALL TIMES WIRING TO BE DONE PER NATIONAL ELECTRICAL CODES (NEC) OR APPLICABLE LOCAL CODES. READ ALL INSTRUCTIONS THOROUGHLY. TURN OFF POWER AT CIRCUIT BREAKER OR FUSE BOX BEFORE PROCEEDING.

**This fixture requires remote installation of the LED driver within the wall. If this requirement cannot be satisfied, STOP INSTALLATION NOW!**

#### STEP 1

- Carefully remove fixture from packaging. Avoid using a sharp blade on the packaging, as doing so may result in damage to the fixture or finish. Glass shade is fragile so handle with care.

#### STEP 2

- Turn off power at fuse box or circuit breaker.

### STEP 3

- Install LED driver within wall, remotely away from fixture. Driver will not fit inside fixture.
- Supply power to input side of remote driver (hot and neutral).
- If installing sconce on a 0-10V dimming system, run purple and gray low voltage wires to dimmer.
- Run red and black LED driver leads to outlet box where fixture will be installed.

### STEP 4

- Loosen set screws on underside of sconce. (Figure 1)
- For illustration purposes, screws shown completely removed, but this is not necessary.
- Remove mounting bracket.

### STEP 5

- Install mounting bracket to wall electrical box with the screws provided. (Figure 2)



Figure 3



Figure 4

### STEP 6

- While holding fixture, make LED wiring connections with included connectors.
- Connect RED (+) LED wire to red driver wire as discussed in STEP 3.
- Connect BLACK (-) LED wire to black driver wire as discussed in STEP 3.
- Connect the copper fixture wire to the ground wire or ground terminal in the outlet box.
- Push all connections inside the outlet box.

### STEP 7

- Place fixture over mounting bracket at a downward angle so that top of sconce catches on angled tab at top of the mounting bracket. (Figure 2)
- Secure by re-tightening the two set screws on the bottom.

### STEP 8

- Carefully place glass onto support platform. (Figure 3)
- Secure glass by tightening the screws directly behind glass, shown in red. (Figure 4)