

INSTALLATION INSTRUCTIONS

DA2034 Oval Single Sconce

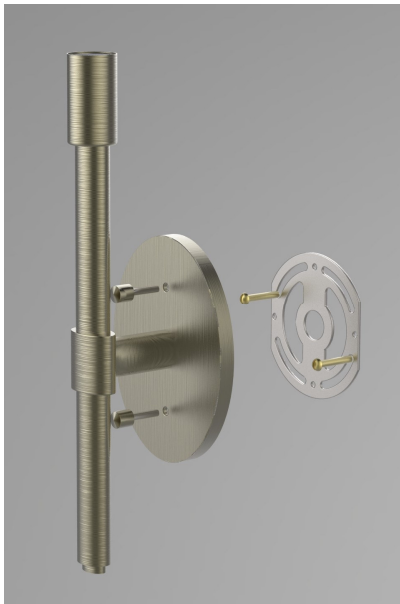


Figure 1



Figure 2



Figure 3

IMPORTANT!

AT ALL TIMES WIRING TO BE DONE PER NATIONAL ELECTRICAL CODES (NEC) OR APPLICABLE LOCAL CODES. READ ALL INSTRUCTIONS THOROUGHLY. TURN OFF POWER AT CIRCUIT BREAKER OR FUSE BOX BEFORE PROCEEDING.

STEP 1

- Carefully remove fixture from packaging. Avoid using a sharp blade on the packaging, as doing so may result in damage to the fixture or finish.

STEP 2

- Turn off power at fuse box or circuit breaker.

STEP 3

- Loosen studded thumb knobs on front side of backplate. (Figure 1)
- Remove the mounting bracket and attach to the wall electrical box with the screws provided.

STEP 4

- Make wire connections using included orange twist-on connectors.
- Connect the white fixture lead to the neutral supply wire (typically white).
- Connect black fixture lead to the hot supply wire (typically black).
- Connect the copper fixture wire to the ground wire or ground terminal in the outlet box.
- Push all connections inside the outlet box.

STEP 5

- Align fixture over wall mounting bracket. (Figure 1)
- Secure by re-tightening threaded studs and knobs in wall mounting bracket.

STEP 6

- Insert lamp into socket. (Figure 2)
- A candelabra based B-10 lamp is recommended.
- See fixture label for maximum wattage rating.

STEP 7

- Spread wire clip on inside of lamp shade.
- Place directly over lamp. (Figure 3)