

INSTALLATION INSTRUCTIONS

DA3035-12 Isa Pendant 12

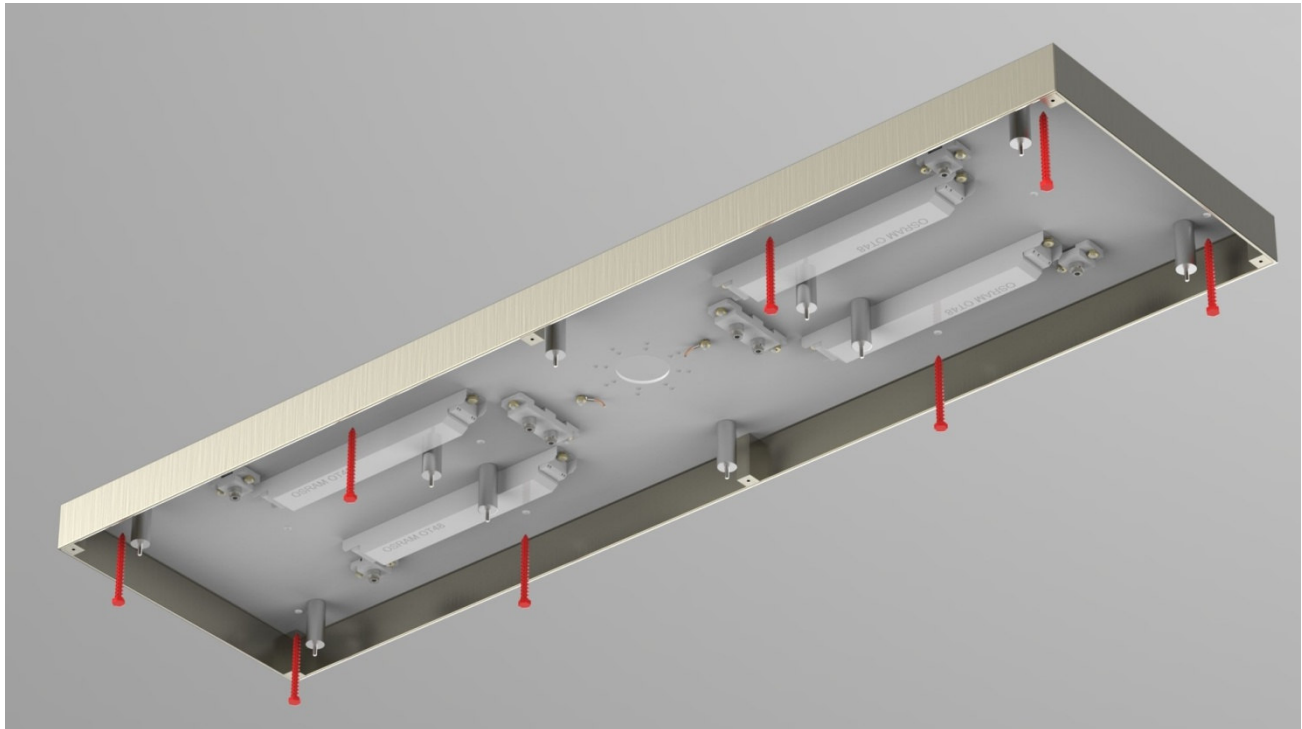
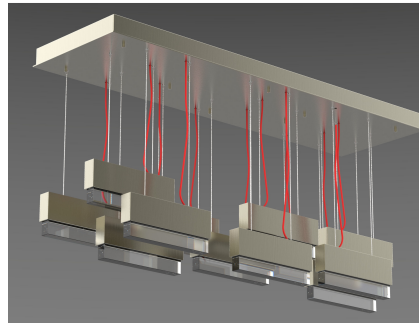


Figure 1

IMPORTANT!

AT ALL TIMES WIRING TO BE DONE PER NATIONAL ELECTRICAL CODES (NEC) OR APPLICABLE LOCAL CODES. READ ALL INSTRUCTIONS THOROUGHLY. TURN OFF POWER AT CIRCUIT BREAKER OR FUSE BOX BEFORE PROCEEDING.

STEP 1

- Carefully remove fixture from packaging. Avoid using a sharp blade on the packaging, as doing so may result in damage to the fixture or finish. Glass shades are fragile so handle with care.

STEP 2

- Turn off power at fuse box or circuit breaker.

STEP 3

- Install canopy assembly directly to ceiling electrical box with screws provided. (Figure 1)
- Due to length and weight of fixture, additional secondary anchors must be used on canopy, independent of the electrical box. Electrician should use anchors appropriate for the load and specific ceiling type, and those anchors may not match those in illustration, shown in red.

STEP 4

- Secure housing plates to canopy. (Figure 2)
- With the assistance of a second person, secure the four cables on to the cable grippers.
- Loosen (but do not remove) knurled collars on cable grippers. (Figure 3)
- Push down on spring-loaded collar. This will allow cable to be fed into it. Insert cable. Release.
- Tug on cable. If cable is securely holding, re-tighten collar.
- Repeat process with other three cables.

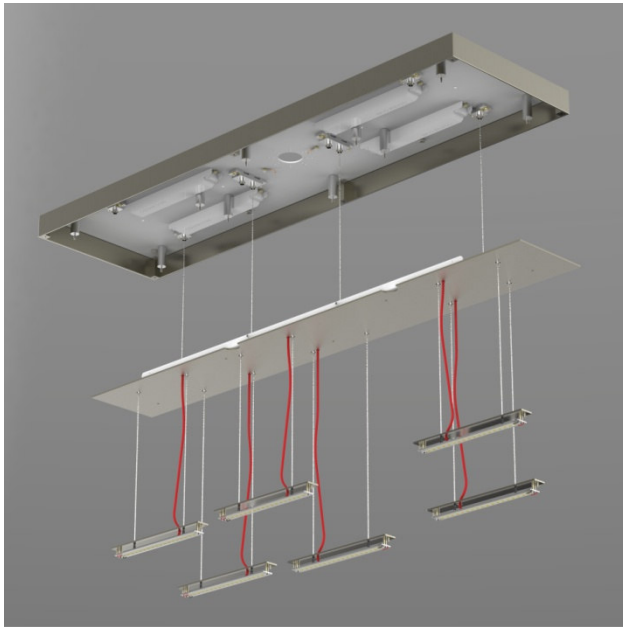


Figure 2



Figure 3

STEP 5

- Secure second housing plate to canopy using the same method. (Figure 4)

STEP 6

- Make main wire connections using included orange twist-on connectors.
- Connect the white fixture lead to the neutral supply wire (typically white).
- Connect the black fixture lead to the hot supply wire (typically black).
- Connect the copper fixture wire to the ground wire or ground terminal in the outlet box.
- If installing on a 0-10V dimming system, connect the purple fixture wire to the purple supply wire.
- Connect the gray fixture wire to the gray supply wire.
- If dimming is not required, cap purple and gray wires separately.
- Push all connections inside the outlet box.

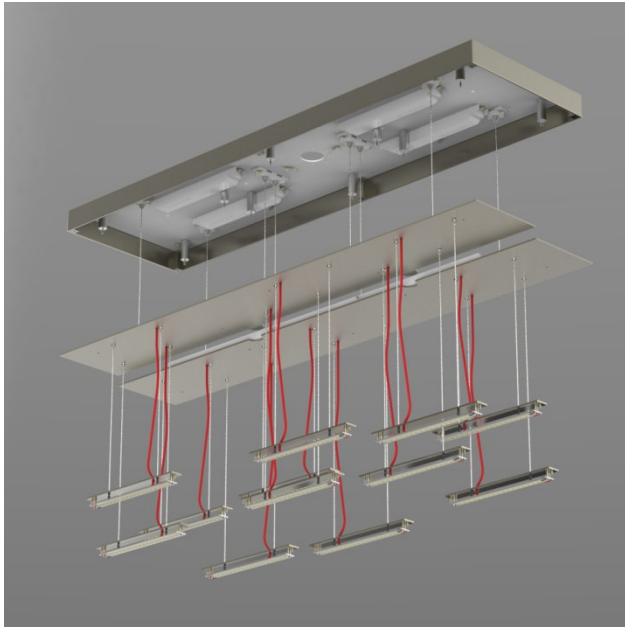


Figure 4

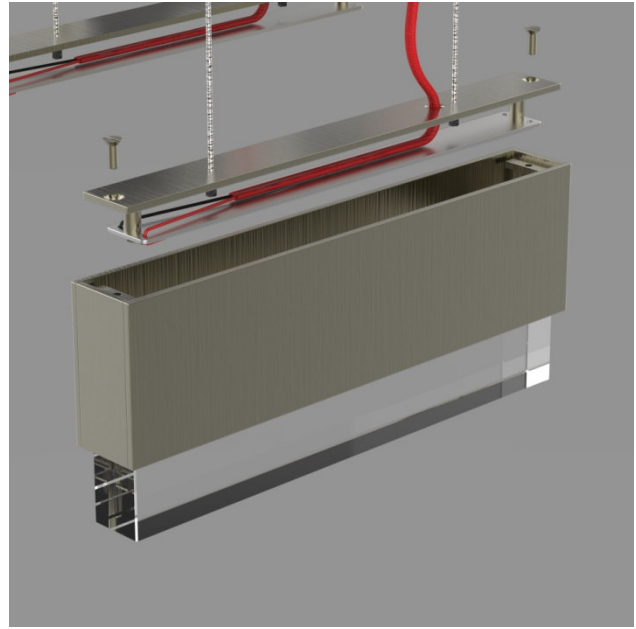


Figure 5

STEP 7

- Make wire connections between LED drivers and housing plates.
- Push the orange “snap-in” connectors together.
- Each driver will connect to the cluster of wires on the housing plate directly below it.
- With all connectors secured, and all outlet box wiring secured, restore power and turn on fixture.
- If fixture heads light up properly, turn power back off. If not, check connections.

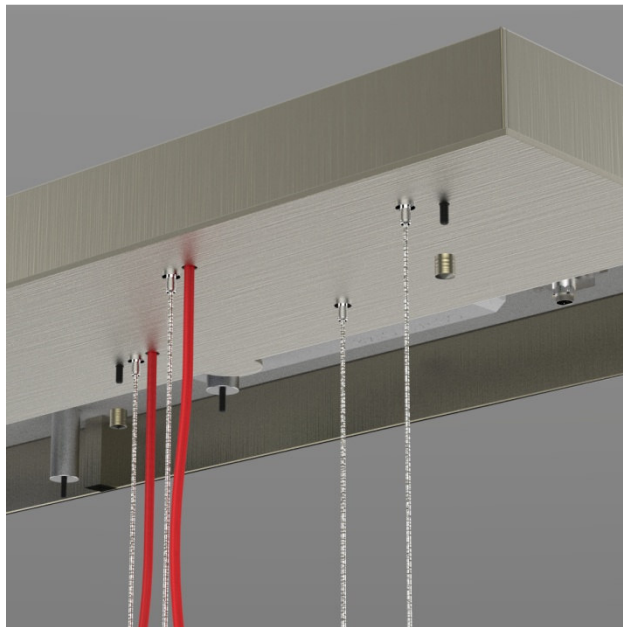


Figure 6

STEP 8

- Lift housing plates up to canopy. (Figure 6)
- Do not force. Be sure cables are not kinked between plates.
- Secure with knobs as shown. Repeat process for second plate.

STEP 9

- Attach decorative housing units. (Figure 7)
- Hold housing unit under cover. Secure with end screws using a screwdriver.

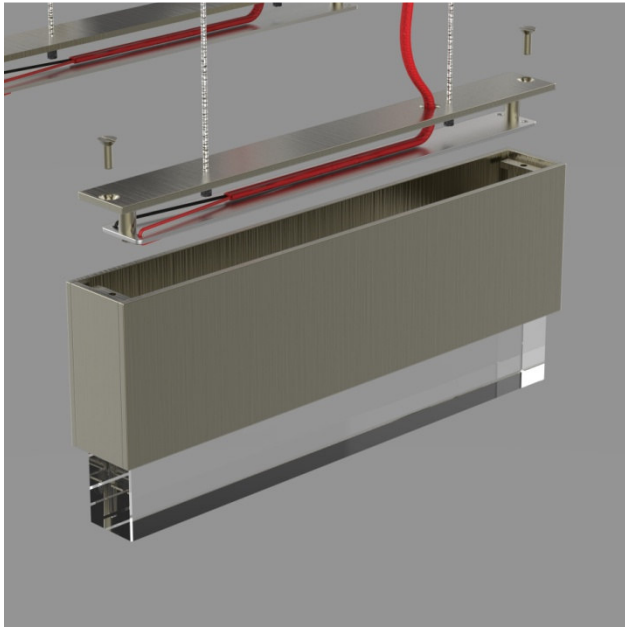


Figure 7

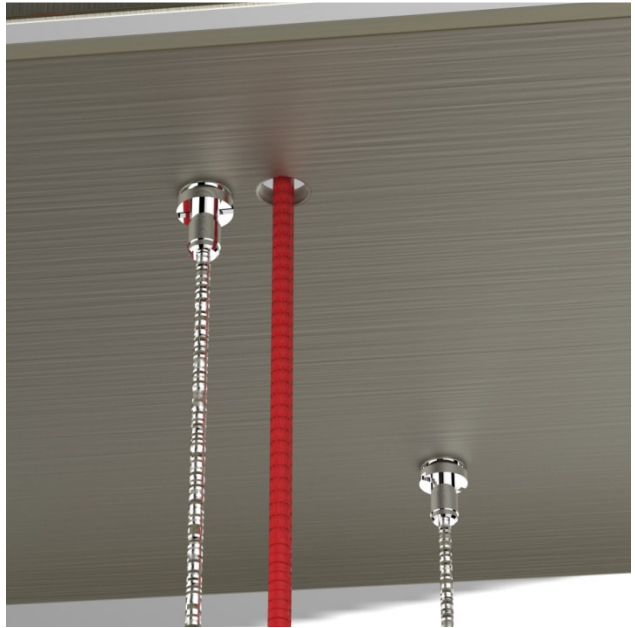


Figure 8

STEP 10

- With all of the housing units attached, slight leveling adjustments may be made by loosening the threaded collars on the cable grips. (Figure 8)
- While the grips are smaller, adjustment method is identical to that described in Step 3/Figure 4.