



INSTALLATION INSTRUCTIONS

C-10813 Numi Linear Pendant 6'
C-10814 Numi Linear Pendant 8'

IMPORTANT!

AT ALL TIMES WIRING TO BE DONE PER NATIONAL ELECTRICAL CODES (NEC) OR APPLICABLE LOCAL CODES. READ ALL INSTRUCTIONS THOROUGHLY. TURN OFF POWER AT CIRCUIT BREAKER OR FUSE BOX BEFORE PROCEEDING.

This fixture requires installation of the LED driver within the wall. If this requirement cannot be satisfied, STOP INSTALLATION NOW!

STEP 1

- Carefully remove fixture components from packaging. Avoid using a sharp blade on the packaging, as doing so may result in damage to the fixture or finish. Handle with care.

STEP 2

- Install driver enclosure(s) within ceiling, remotely away from fixture. Drivers will not fit inside fixture.
- The standard drivers provided are dimmable with multiple different styles of dimmer.
- Make wire connections using included orange twist-on connectors.
- **If installing on ELV/reverse-phase or MLV/forward-phase dimming systems, or a basic switch:**
 - Connect the white driver lead to the neutral supply wire (typically white).
 - Connect the black driver lead to the hot supply wire (typically black).
 - Connect the copper ground wire to the ground supply wire.
 - The fixture may now be dimmed using an ELV/MLV/Triac dimmer.
- **If installing on a 0-10V dimming system**, follow the previous steps plus:
 - Connect the purple driver wire to the purple supply wire.
 - Connect the pink (or gray) driver wire to the pink (or gray) supply wire.
- **If 0-10V dimming is not required**, cap purple and pink (or gray) wires, as these wires are not needed.
- Route low-voltage cable(s) on side of enclosure to the electrical box where the fixture will be installed.
- If low-voltage cable is not long enough, electrician should splice extra length wiring onto the end.

STEP 3

- Separate mounting brackets from decorative canopies.
- Install the first mounting bracket directly to the ceiling electrical box using the provided screws. (Fig 1)
- When pre-planning the positioning of the second bracket, note proper orientation of flanges. (Fig 2)

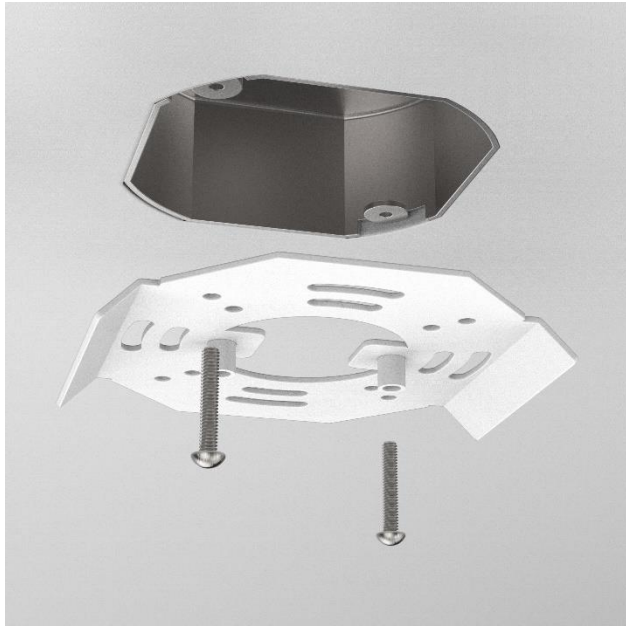


Figure 1

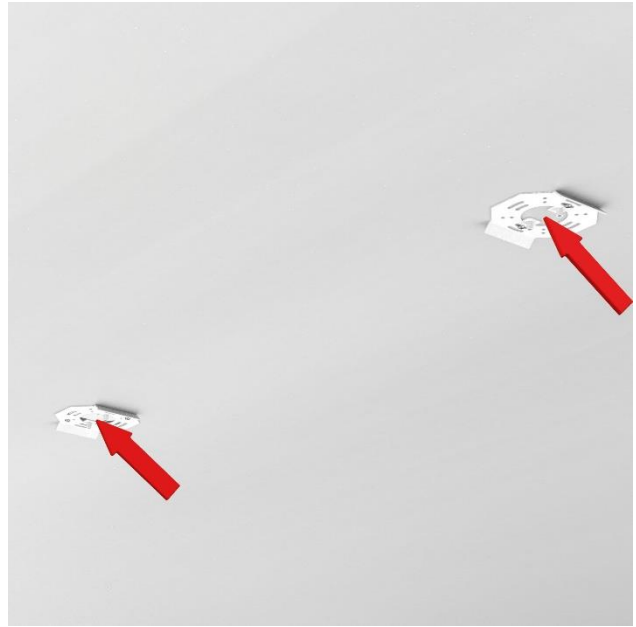


Figure 2

STEP 4

- **Critical:** Prior to hanging second bracket, determine proper spacing (Fig 2) as follows:
 - Numi Linear Pendant 6': **center-to-center bracket spacing** should be 35-5/16"
 - Numi Linear Pendant 8': **center-to-center bracket spacing** should be 47-5/16"
- Mark the ceiling accordingly with a pencil.

STEP 5

- Hang the second mounting bracket at marked point, using support anchors. (Fig 3)
- Installer should only use an anchor type suitable for the specific ceiling structure.

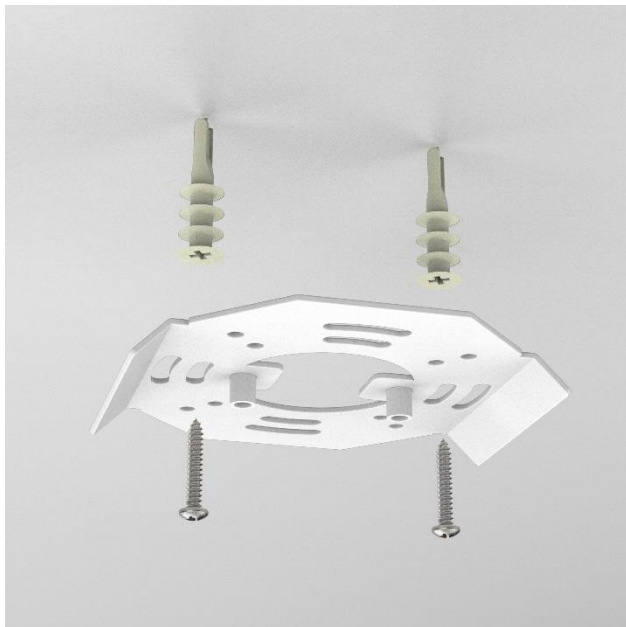


Figure 3



Figure 4

STEP 6

- Hang cable bracket directly to the mounting bracket on the non-electrified end of the fixture. (Fig 4)

STEP 7

- Prepare main fixture for installation.
- Slide all O-rings (shown red) to the bottom of the power cord (Fig 5)
- Be sure that O-rings wrap around the power cord and the nearest aircraft cable (see arrow).

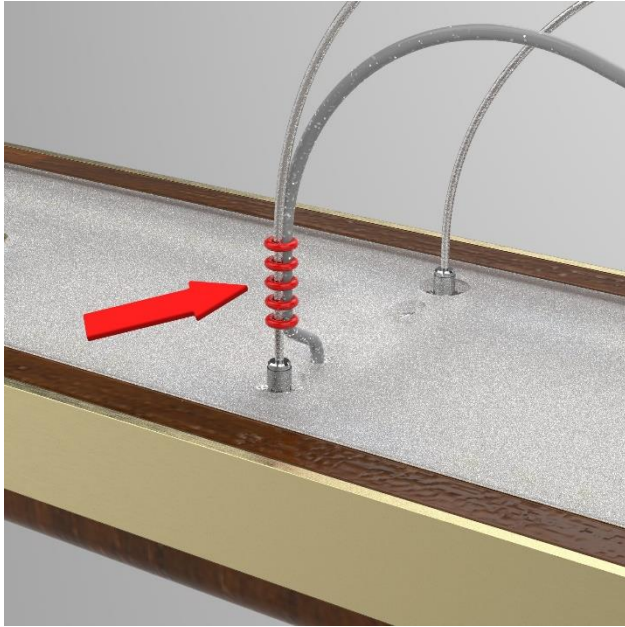


Figure 5

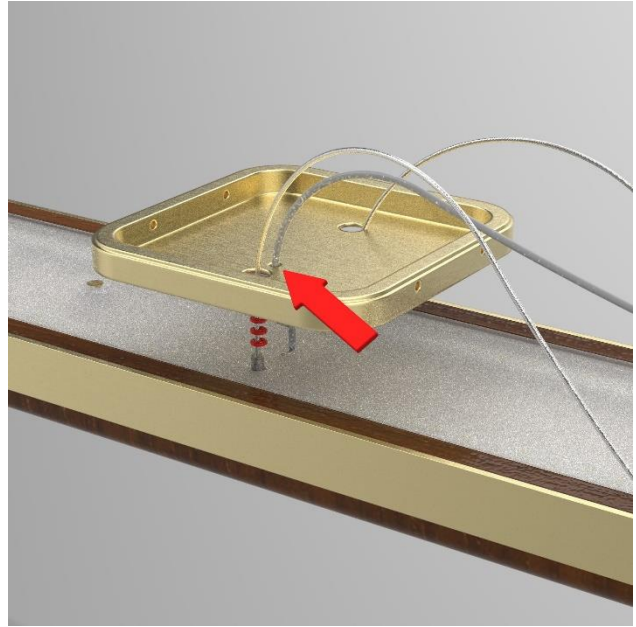


Figure 6

STEP 8

- Gently feed cord and cables through holes in decorative canopy.
- On the power cord end of the fixture, use the decorative canopy with the third hole. (Fig 6)
- Feed power cord through the smallest hole.
- Repeat process on opposite end, minus the power cord.



Figure 7



Figure 8

STEP 9

- Due to the weight and length of the fixture, a second installer will be needed for the next steps.
- On the non-electrified end of the fixture, feed aircraft cables up through the cable gripper. (Fig 7)
- The end of the cable gripper is spring-loaded (shown red). Press end to allow cable to be fed into it.
- Releasing the cable gripper will safely lock the cable in place.
- Pull a few inches of extra slack through the cable gripper.

STEP 10

- On the electrical end of the fixture, make wire connections using provided connectors. (Fig 8)
- With a second person holding the fixture, connect red fixture wire to red driver wire.
- Connect black fixture wire to black driver wire.
- Connect white fixture wire to white driver wire.
- Connect green fixture wire to green driver wire.

STEP 11

- Secure second cable bracket to mounting bracket as shown. (Fig 8)
- Feed aircraft cables into the cable grippers as was instructed in Step 9.

STEP 12

- With fixture fully hung on ceiling, adjust all cables so that fixture is level and at proper hang height.
- Using a pair of wire cutters, snip aircraft cables close to the cable gripper. (Fig 9)

STEP 13

- Slide decorative canopies up toward the ceiling. (Fig 10)
- Using an Allen wrench, secure canopies in position by tightening the set screws on the sides of the decorative canopies. (Fig 11)

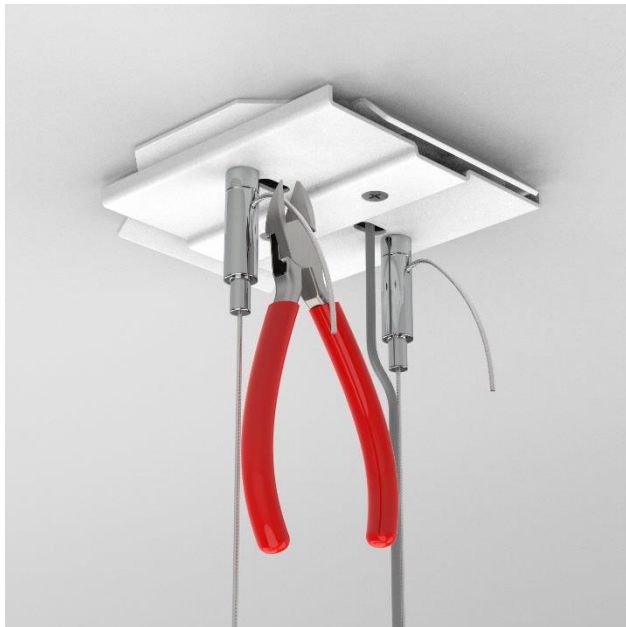


Figure 9

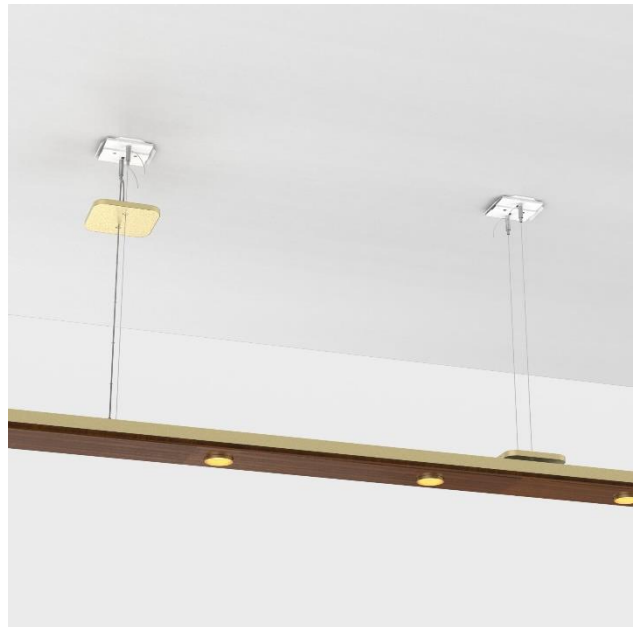


Figure 10



Figure 11

STEP 14

- Slide O-rings evenly up the length of the power cord, to keep it securely positioned against cable.
- O-ring shown red. (Fig 11)

STEP 15

- Because the fixture has two power drivers, the up lights and the down lights can be controlled independently, if two switches or controls are used.

STEP 16

- Restore power to fixture.