



INSTALLATION INSTRUCTIONS

10845 Callisto Five
10848 Callisto Nine
10849 Callisto Twelve
10851 Callisto Eighteen

IMPORTANT!

AT ALL TIMES WIRING TO BE DONE PER NATIONAL ELECTRICAL CODES (NEC) OR APPLICABLE LOCAL CODES. READ ALL INSTRUCTIONS THOROUGHLY. TURN OFF POWER AT CIRCUIT BREAKER OR FUSE BOX BEFORE PROCEEDING.

STEP 1

- Carefully remove fixture components from packaging.
- Avoid using a sharp blade on the packaging, as doing so may result in damage to the fixture or finish.
- Spheres are made from alabaster, which is a delicate stone that can crack, dent, or bruise. Leave spheres wrapped until installation is complete. Handle with care.

STEP 2

- Loosen set screws from both sides of the canopy, using the included Allen key. (Figure 1).
- Separate the canopy from the mounting assembly components.
- Separate aluminum disk by unthreading three brass thumb knobs, shown red (Figure 2).

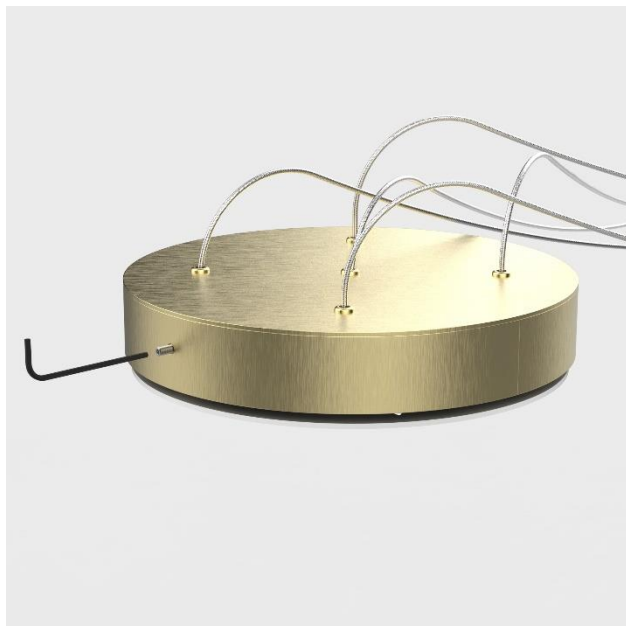


Figure 1

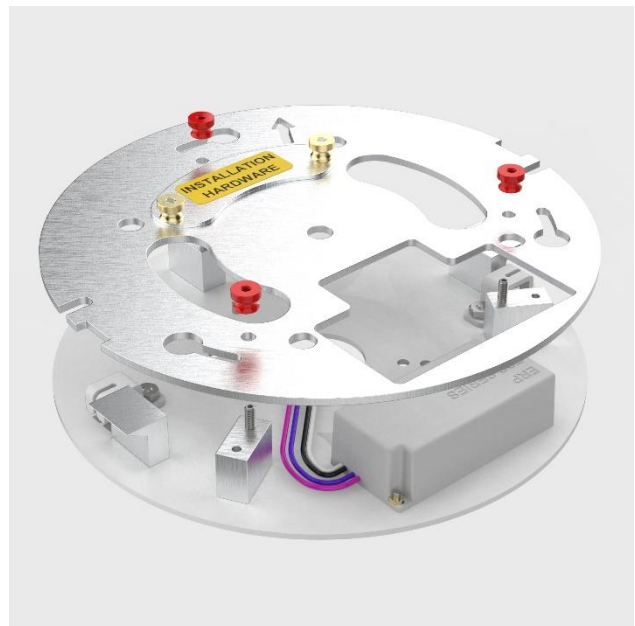


Figure 2

STEP 3

- Secure ceiling disk to the electrical box using the provided screws (Figure 3).
- On the Callisto 5, only the two screws (shown red) are necessary for hanging to an outlet box.
- On the Callisto 9, due to the larger size and heavier weight, secondary ceiling anchors must be used. Anchors have been provided but the installer should use a style of anchor appropriate for the specific ceiling type (not shown).

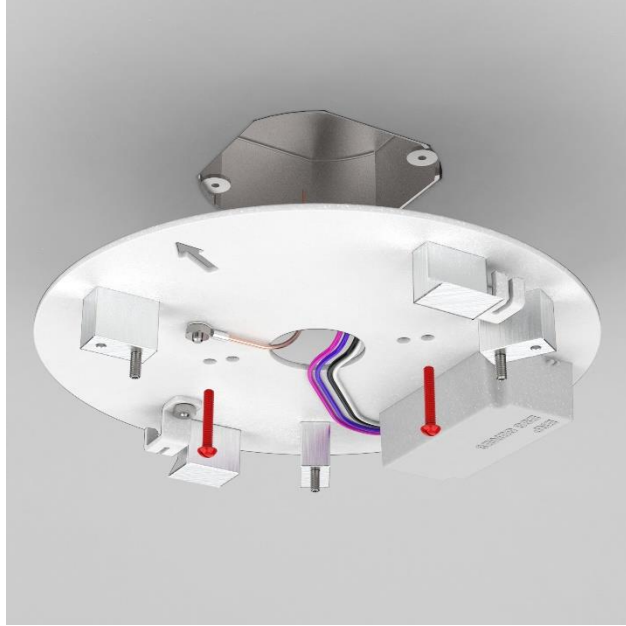


Figure 3



Figure 4

STEP 4

- With disk mounted to ceiling, insert the three 2½" long screws into aluminum blocks (Figure 4).
- Screws shown red.

STEP 5

- Make wire connections using included orange connectors. (Figure 4)
- The standard driver on this fixture is dimmable with multiple different styles of dimmers.
- **If installing on ELV/reverse-phase or MLV/forward-phase dimming systems, or a basic switch:**
 - Connect the white driver leads to the neutral supply wire (typically white).
 - Connect the black driver leads to the hot supply wire (typically black).
 - Connect the copper fixture wire to the ground wire or ground terminal in the electrical box.
 - The fixture may now be dimmed using a compatible ELV/MLV/Triac dimmer.
- **If installing on a 0-10V dimming system, follow the previous steps plus:**
 - Connect the purple driver wire to the purple supply wire.
 - Connect the pink (or gray) driver wire to the pink (or gray) supply wire.
- **If 0-10V dimming is not required:**
 - Cap purple and pink (or gray) wires as these wires are not needed.

STEP 6

- Align aluminum disk key slots over long screws, twist into position and let disk rest on screw heads.
- Be sure that arrows on ceiling disk and aluminum disk are aligned in the same direction (Figure 5)

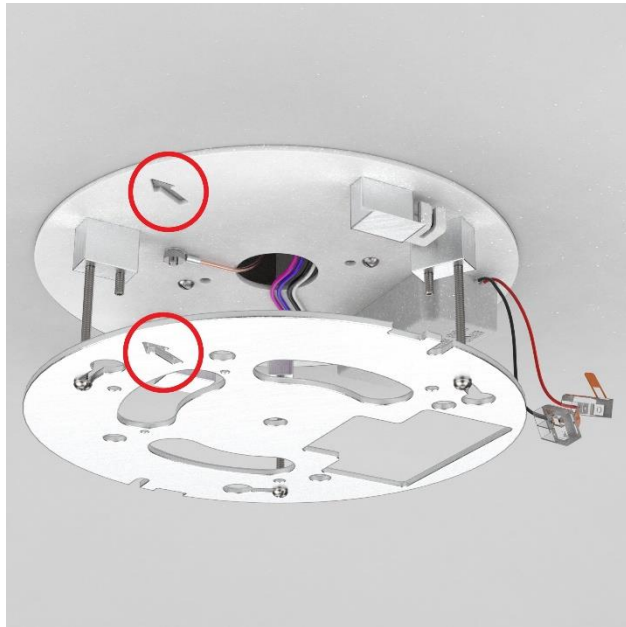


Figure 5



Figure 6

STEP 7

- Carefully lift fixture toward ceiling disk.
- Hook safety cables over the metal brackets (shown red) on opposite sides of fixture (Figure 6).
- With both cables safely secured, allow fixture to hang freely.

STEP 8

- Make the remaining wire connections using the included connectors:
 - Connect the red (+) fixture wires to the red (+) driver wire.
 - Connect the black (-) fixtures wire to the black (-) driver wire.
- Carefully route wiring above aluminum disk and set in place.



Figure 7

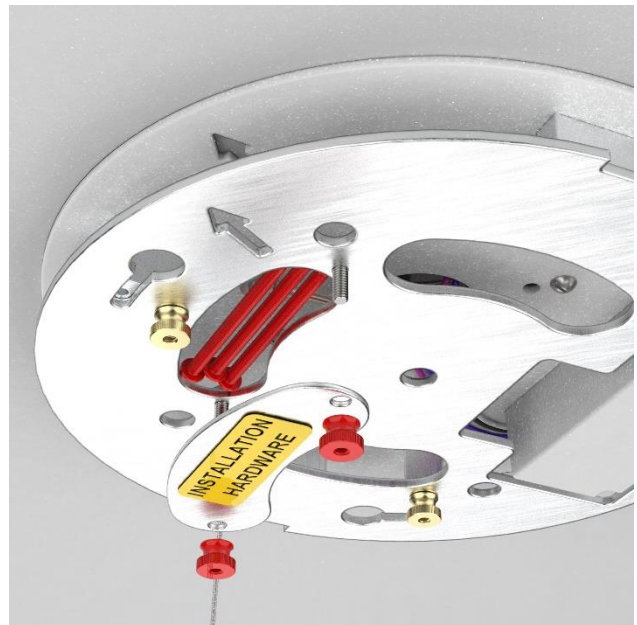


Figure 8

STEP 9

- Slide aluminum disk up against ceiling disk blocks and secure with brass thumb knobs (Figure 7).
- Disk must sit flat. If it does not, check for pinched wiring or connectors.
- Remove the 2½" screws from the blocks.

STEP 10

- For future maintenance issues, tuck the three 2½" screws above the access plate which is marked with an "INSTALLATION HARDWARE" label (Figure 8).
- Secure access plate to aluminum disk with thumb knobs.



Figure 9



Figure 10

STEP 11

- Carefully raise fixture canopy up over the mounting disk.
- Be sure that set screws on side of canopy align with the two notches on aluminum disk (Figure 9)
- Canopy and disk must align for proper fit. Do not force into position.
- If canopy doesn't set properly, check for pinched wiring or safety cables.

STEP 12

- Lock into position by tightening the set screws using an Allen key (Figure 10).

STEP 13

- Unwrap hanging spheres.

STEP 14

- Restore power to fixture.

(For LED or sphere maintenance, please turn to the next page)

If a sphere needs to be removed or replaced, or if an LED must be accessed, use the following steps:

- Slide metal dome up on cord (Figure 11).
- Sphere is held in place with two set screws on opposite sides of rim.
- Carefully support sphere and loosen set screws.
- Reverse the steps to replace a sphere.



Figure 11