

INSTALLATION INSTRUCTIONS

DA2026 Alex Sconce

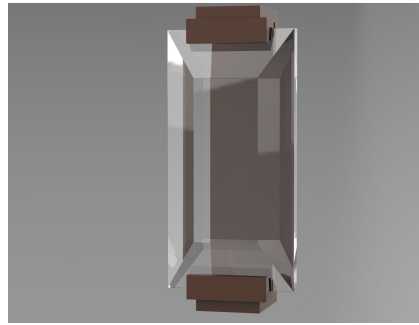


Figure 1

IMPORTANT!

AT ALL TIMES WIRING TO BE DONE PER NATIONAL ELECTRICAL CODES (NEC) OR APPLICABLE LOCAL CODES. READ ALL INSTRUCTIONS THOROUGHLY. TURN OFF POWER AT CIRCUIT BREAKER OR FUSE BOX BEFORE PROCEEDING.

Due to narrow design of sconce, this installation requires a 3" mud-ring style outlet box, or an improvised one-gang switch box. Fixture will not completely cover larger-sized boxes.

STEP 1

- Carefully remove fixture from packaging. Avoid using a sharp blade on the packaging, as doing so may result in damage to the fixture or finish. Glass shade is fragile so handle with care.

STEP 2

- Turn off power at fuse box or circuit breaker.

STEP 3

- Loosen screws (shown in red) from top and bottom of sconce. (Figure 1)
- Remove mounting bracket from backside of fixture assembly.

STEP 4

- Secure mounting bracket over the junction box with the screws provided. (Figure 2)
- Be sure that cable anchorage is oriented at the top of the backplate.
- Due to the weight of the fixture, install secondary anchors at top and bottom of bracket. Electrician should select anchors suitable for the wall type, and the anchors shown in the illustration may differ from those used.

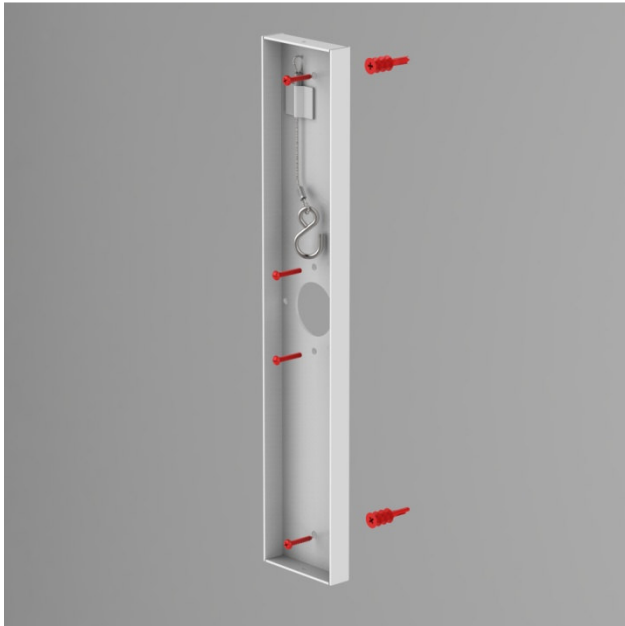


Figure 2



Figure 3

STEP 5

- Secure cable hook onto tab on backside of fixture. (Figure 3)
- Gently release fixture so that it is totally supported by the cable.

STEP 6

- Make wire connections using included twist-on connectors. (Figure 4)
- Connect the white fixture lead to the neutral supply wire (typically white).
- Connect the black fixture lead to the hot supply wire (typically black).
- Connect the copper fixture wire to the ground wire or ground terminal in the outlet box.
- If installing on a 0-10V dimming system, connect the purple fixture lead to the purple supply wire.
- Connect the gray fixture lead to the gray supply wire.
- Push all connections inside the outlet box.



Figure 4



Figure 5

STEP 7

- After making wire connections, lift scone and align over mounting bracket. (Figure 5)
- Secure to wall by re-tightening the screws.

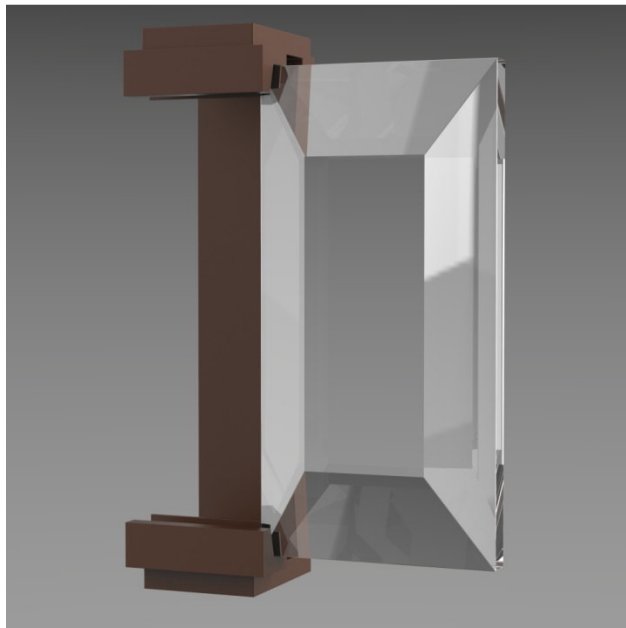


Figure 6

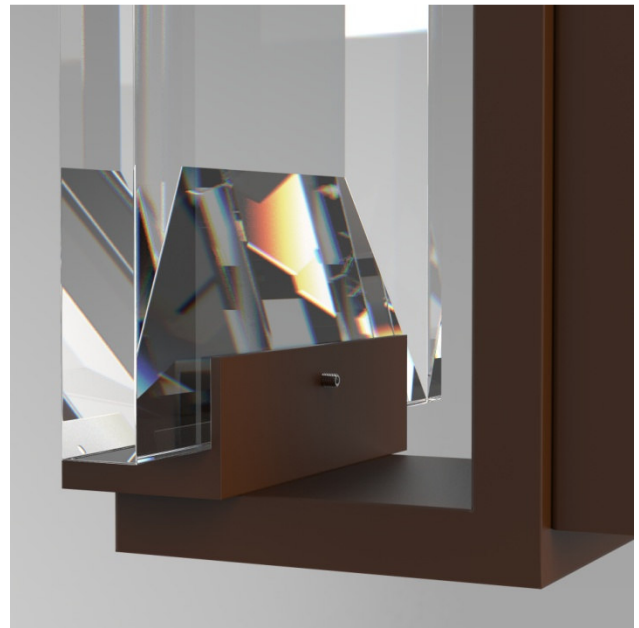


Figure 7

STEP 8

- Carefully slide glass into support claws. Do not force. (Figure 6)
- Secure glass by tightening set screws on backside of claws. Do not over-tighten. (Figure 7)