



INSTALLATION INSTRUCTIONS

C-10821 Lily Sconce

IMPORTANT!

AT ALL TIMES WIRING TO BE DONE PER NATIONAL ELECTRICAL CODES (NEC) OR APPLICABLE LOCAL CODES. READ ALL INSTRUCTIONS THOROUGHLY. TURN OFF POWER AT CIRCUIT BREAKER OR FUSE BOX BEFORE PROCEEDING.

This fixture requires installation of the LED driver within the wall or other remote location. If this requirement cannot be satisfied, STOP INSTALLATION NOW!

STEP 1

- Carefully remove fixture components from packaging. Avoid using a sharp blade on the packaging, as doing so may result in damage to the fixture or finish. Handle with care.
- Hold corded assembly as straight as possible to avoid unnecessary strain on wiring connections.

STEP 2

- Install driver enclosure within wall or ceiling or another convenient location, remotely away from fixture. The driver will not fit inside fixture.
- Make wire connections using included orange twist-on connectors.
- **If installing on an ELV/reverse-phase or Triac dimmer system, or a basic switch:**
 - Connect the white driver lead to the neutral supply wire (typically white).
 - Connect the black driver lead to the hot supply wire (typically black).
 - Connect the green or copper ground wire to the ground supply wire.
- Run black and red LED wires to the outlet box location where fixture will be hung.
- Leave black and red driver wires dangling from outlet box for hookup on a later step.

STEP 3

- Separate backplate from the mounting disk by loosening the two set screws with an Allen key.
- Carefully set aside main fixture assembly on a padded surface. (Fig 1)



Figure 1

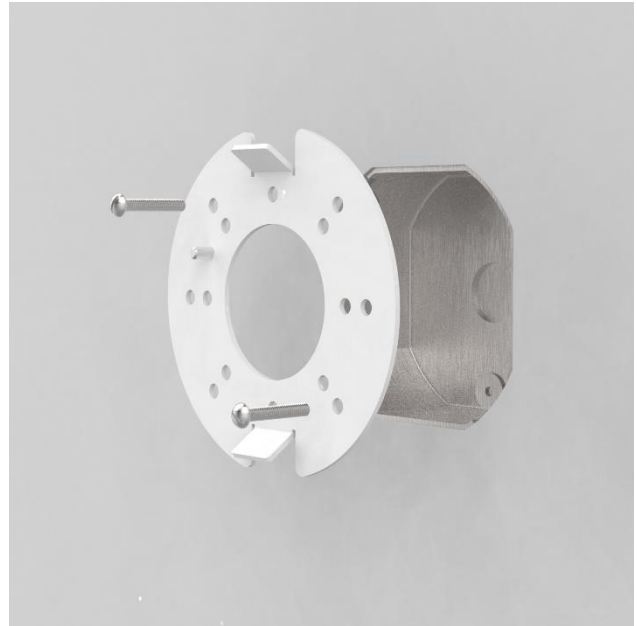


Figure 2

STEP 4

- Hang mounting disk to wall electrical box using provided screws. (Fig 2)



Figure 3



Figure 4

STEP 5

- Raise main fixture close to mounting disk. (Fig 3)
- Using the provided connectors, connect the red (+) fixture wire to the red supply wire.
- Connect the black (-) fixture wire to the black supply wire.
- Push all wire connections into the outlet box.

STEP 6

- Align backplate set screw locations with flanges on mounting disk. (Fig 4)
- Secure backplate by tightening the two set screws, using an Allen key.
- Allow fixture to hang freely and give a gentle tug, to check for proper installation.



Figure 5

STEP 7

- Restore power to fixture.