

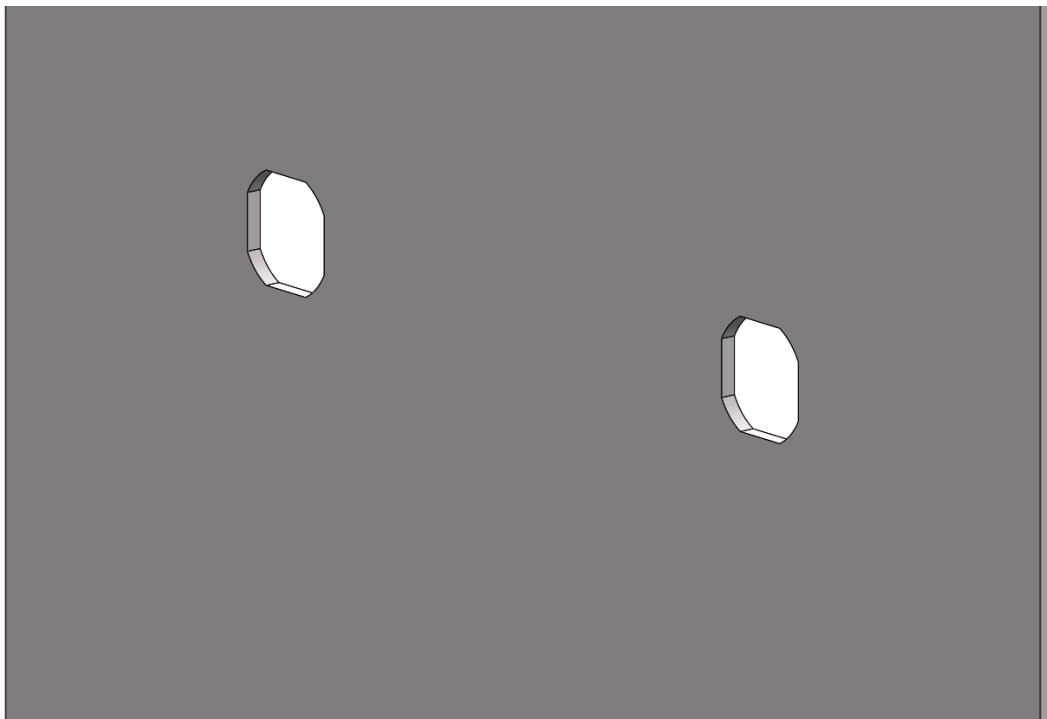
Preliminary Lucia Art Light Installation Instructions

PREMIUM MUDDED VERSION

Caution: Turn off power at the circuit breaker prior to doing any work

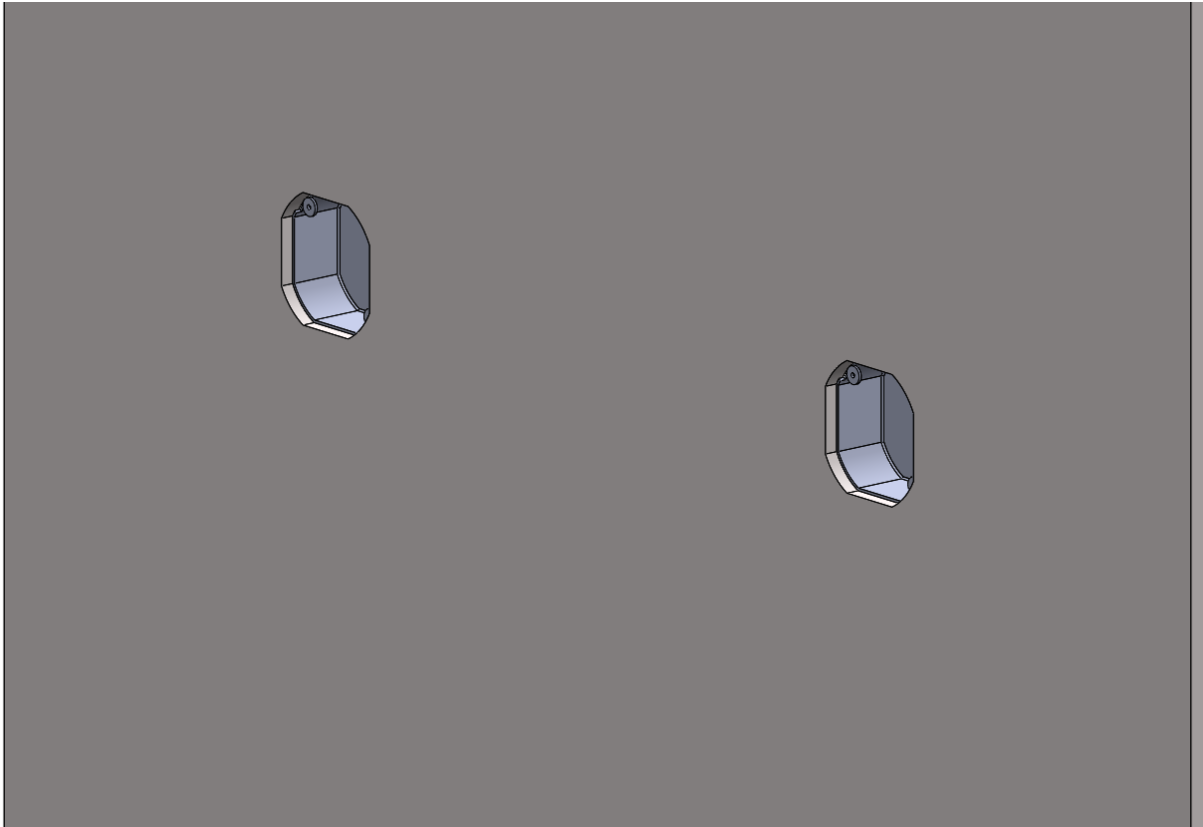
Note: The LED driver must be installed remotely. If the driver is unable to be placed remotely, stop installation now.

1. Using the chart below, determine the proper center-to-center dimensions of the Lucia Art Light. On center, at the desired height, prepare holes for installation of (2) octagonal j-boxes, measuring 4" from corner to corner and 3.50" from side to side.



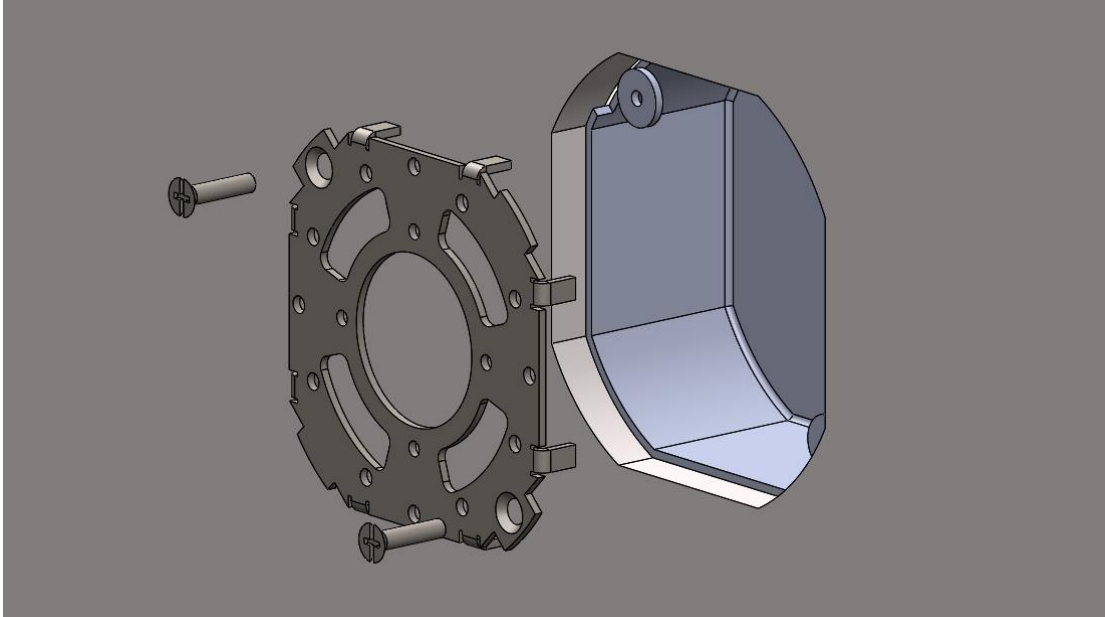
Fixture Length	Stem Spacing
24"	22"
30"	28"
36"	34"
42"	40"
48"	46"
54"	52"
60"	58"

2. Install octagonal j-boxes in the wall. It is critical that the box is recessed $\frac{3}{8}$ " (9-10mm) from the face surface of the drywall. The box must not be flush to the wall surface as in a typical installation.

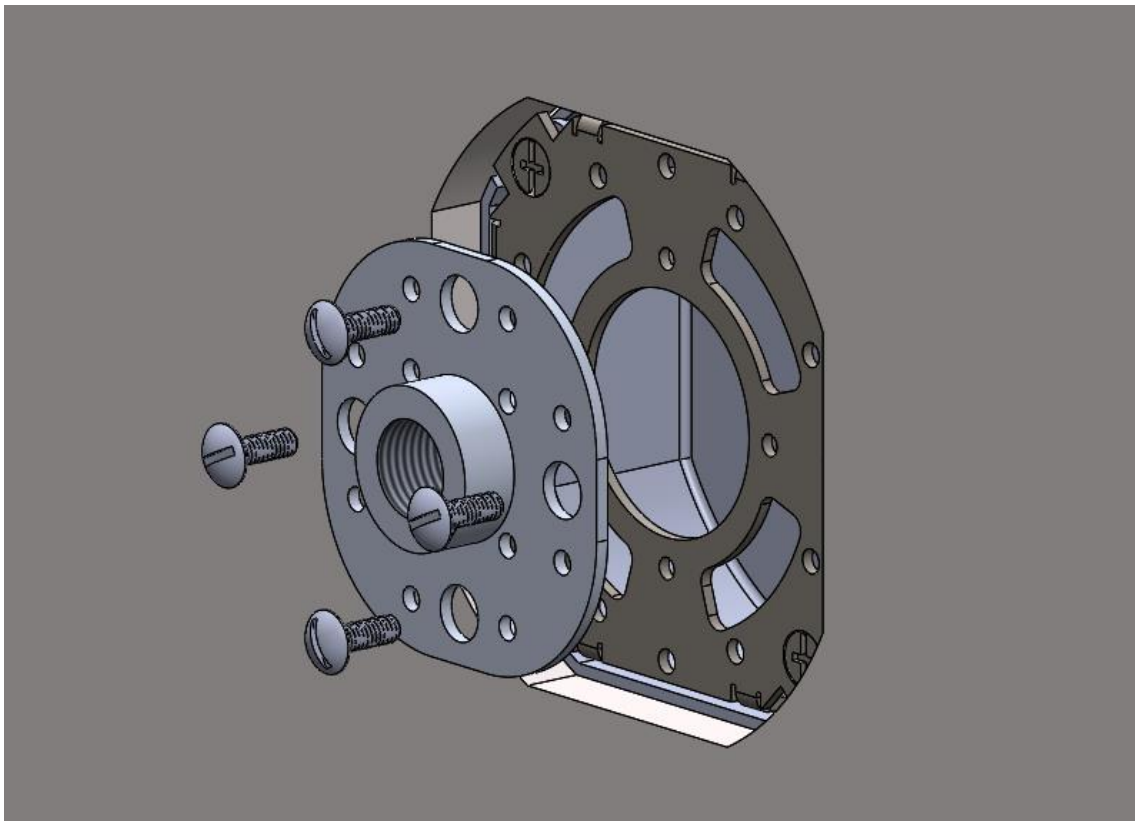


3. Secure the provided driver enclosure in a convenient location near the lighting fixture. With power turned off, connect the supply hot wire (typically black) to the black driver wire using the provided twist-on connectors. Connect the supply neutral wire (typically white) to the white driver. Connect the supply ground wire (typically green or copper) to the driver ground wire. This setup will work with a basic on-off, or may be used with either an ELV or MLV/Triac style dimmer switch.
4. Feed the low-voltage power cable leads to the electrical box as installed in STEP 2. Be sure to check the fixture to confirm whether the wire leads are intended to come out the left side or right side of the fixture. Fixture cannot be flipped during installation or it will become an upright and won't be able to illuminate art work.

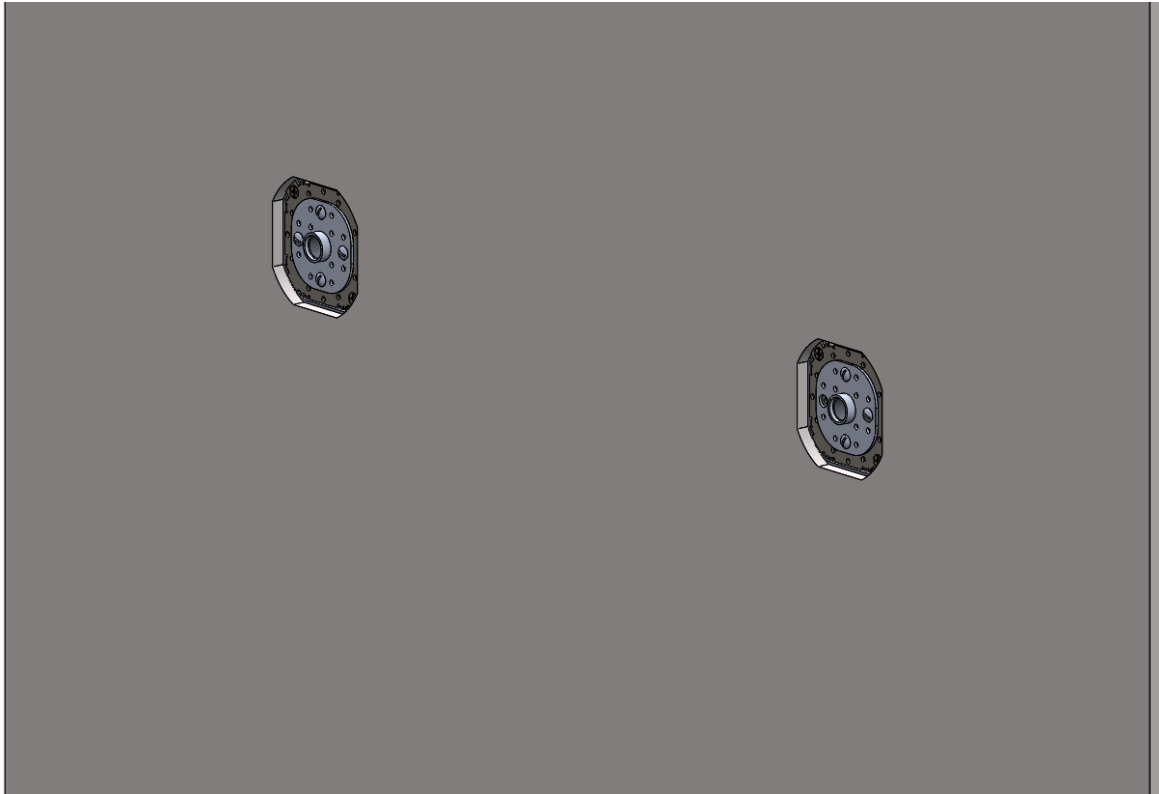
5. Attach steel mud plates to the two boxes using the provided screws as shown.



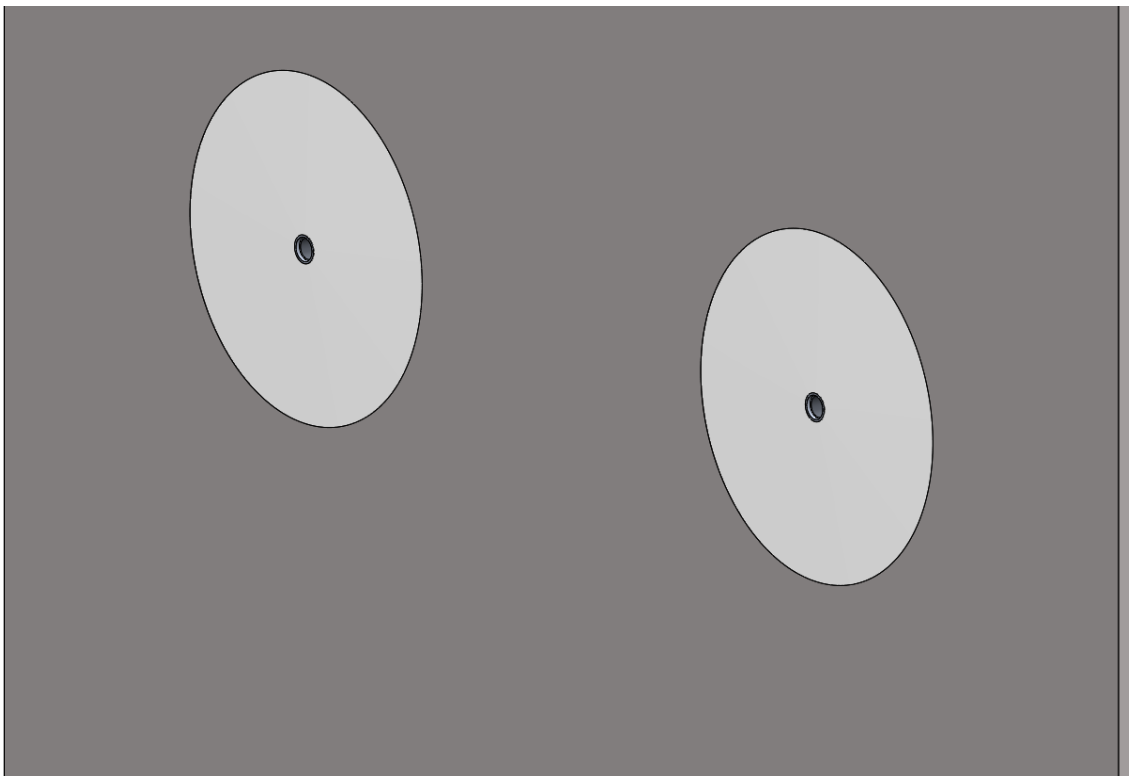
6. Secure the adjustment plates to the mud plates using the large, truss head screws that were provided. The large holes allow the adjustment plates to be slid upward/downward, and laterally. Check to make sure the center-to-center distance of the shaft corresponds to the distance listed on the Step 1 Chart. Check to make sure that the shafts are level with one another.



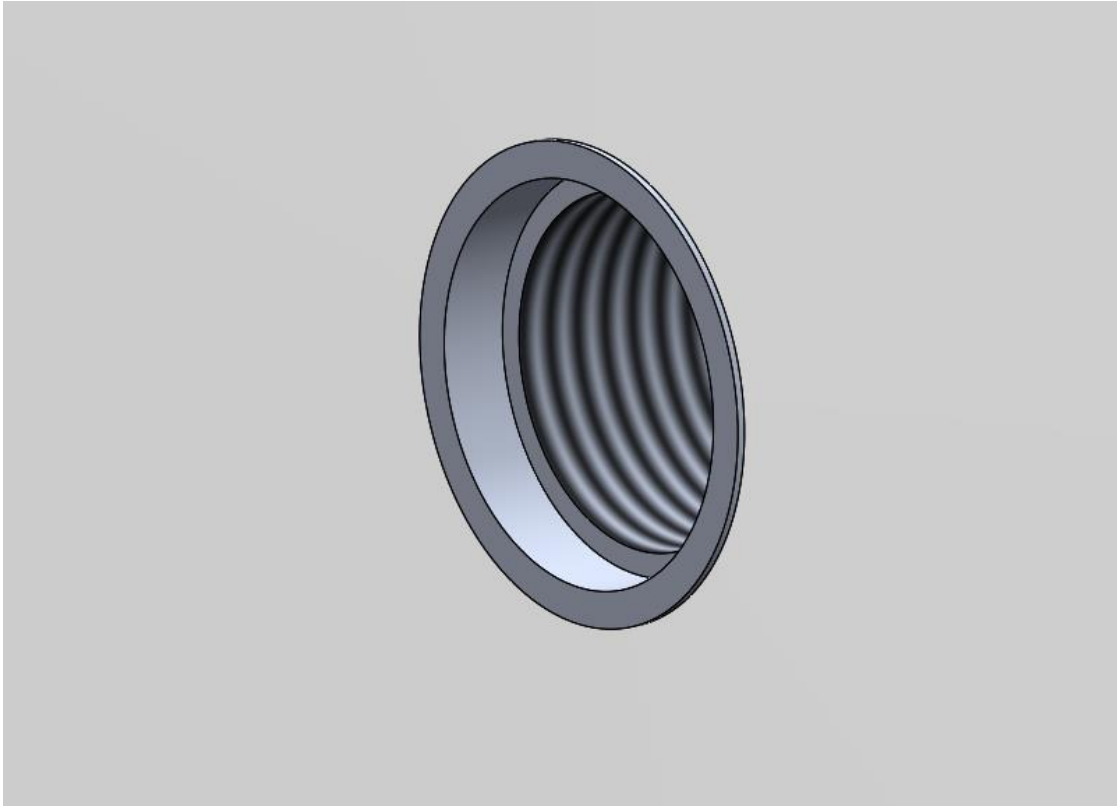
7. With the screws on the adjustment plates fully tightened, prepare for mudding work.



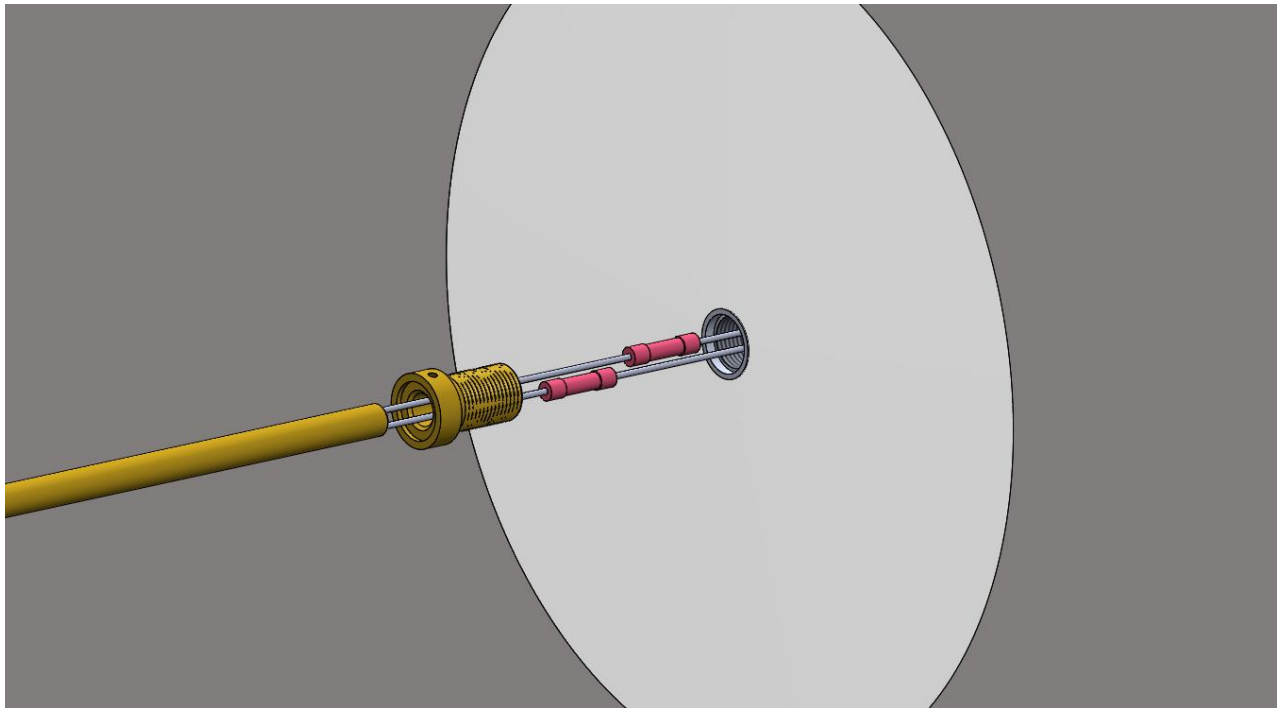
8. Using joint compound and paper or mesh tape, apply the mud as shown. Use a feathering technique, then sand the wall smooth.



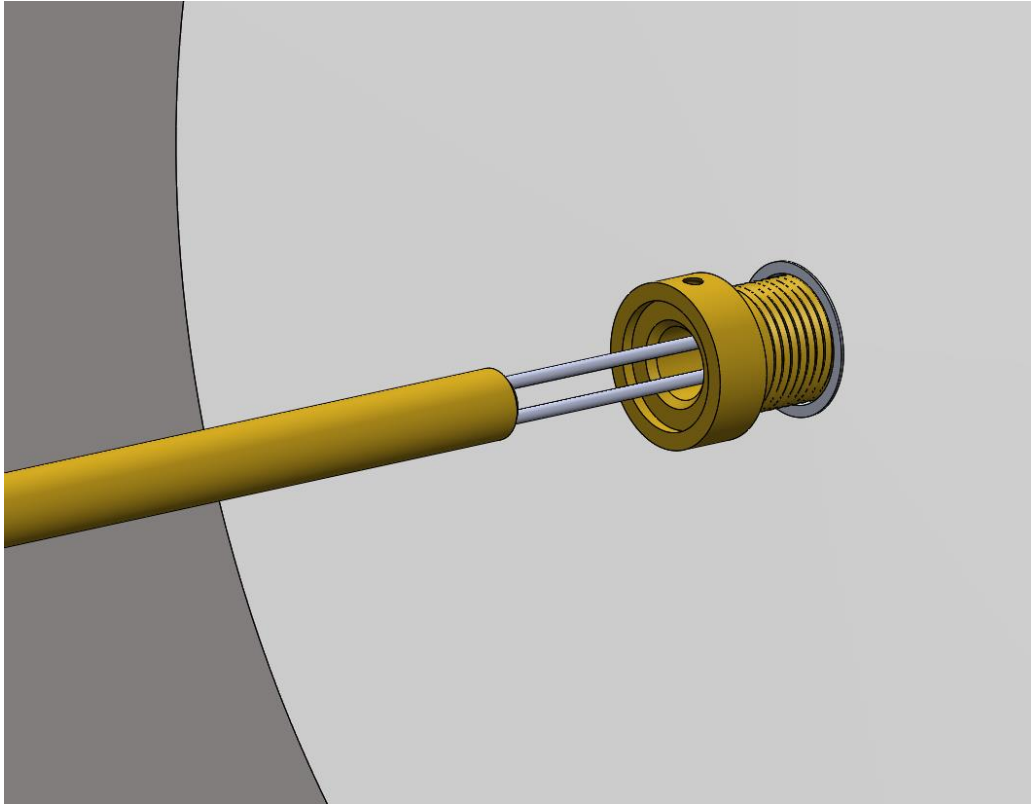
9. The mudded-over shaft should protrude slightly from the mud, or be flush. Take precautions to make sure that the hole and threads remain free of mud.



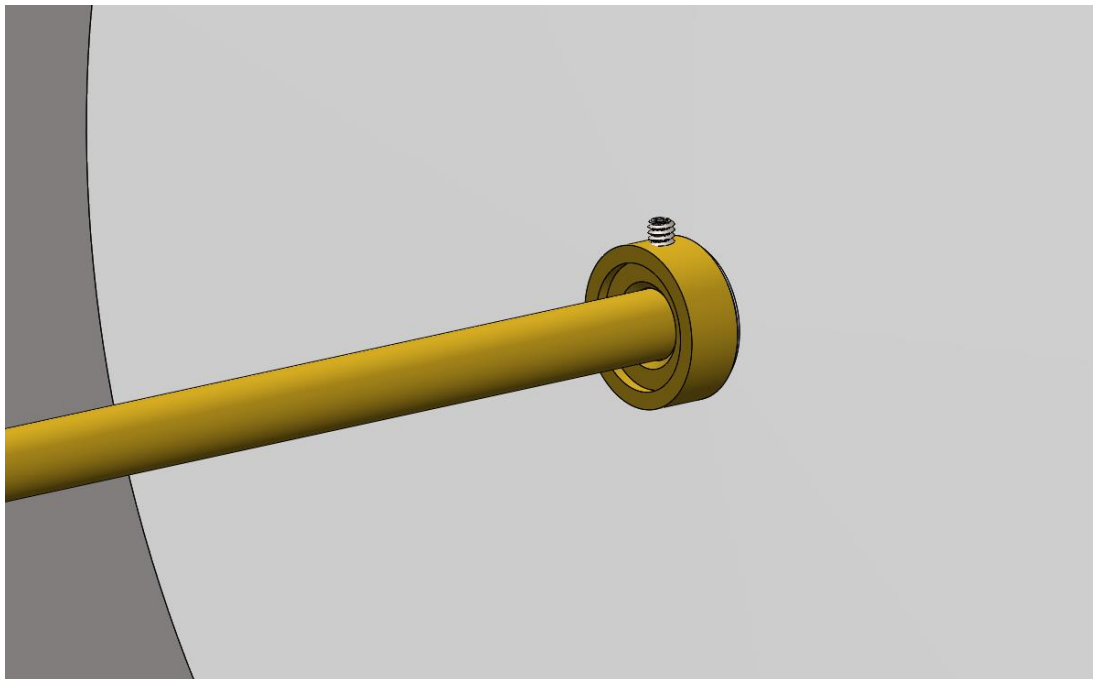
10. Using a tool or small hook, pull the wire leads from the j-box and out the shaft hole. Place fixture next to the wall. Using small crimp connectors, make wire connections. Connect red (+) lead to red wall wire. Connect black (-) lead to black wall wire.



11. After crimping, carefully thread the brass mud collar directly into the wall shaft until fully tightened. Repeat this step on the opposite side.



12. Carefully slide fixture arms into the mud collars until they stop, about 1". Secure with the small set screws, using the provided Allen wrench.



13. With fixture secured to the wall, restore power to the circuit.

