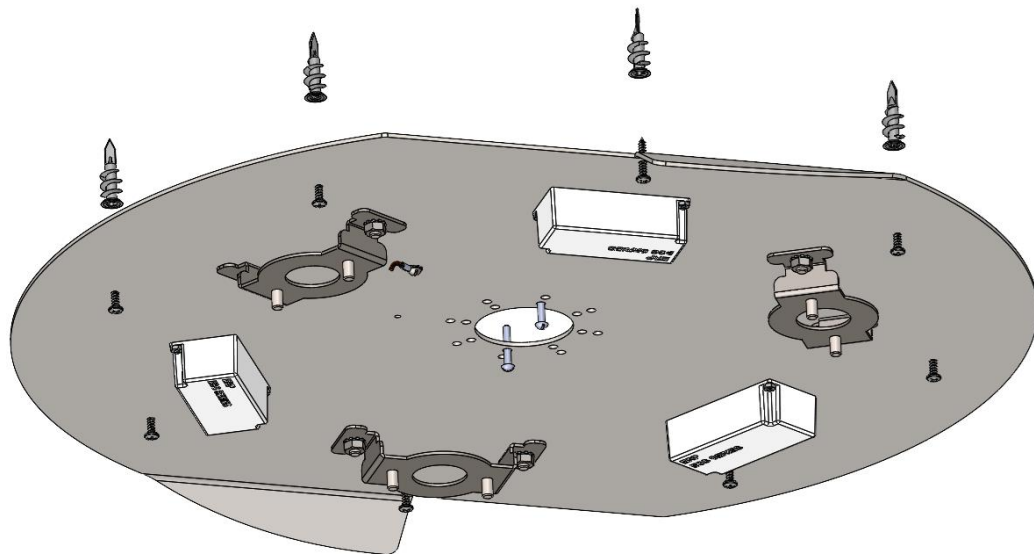


Nest Triple Pendant Preliminary Installation Instruction (C-10861)

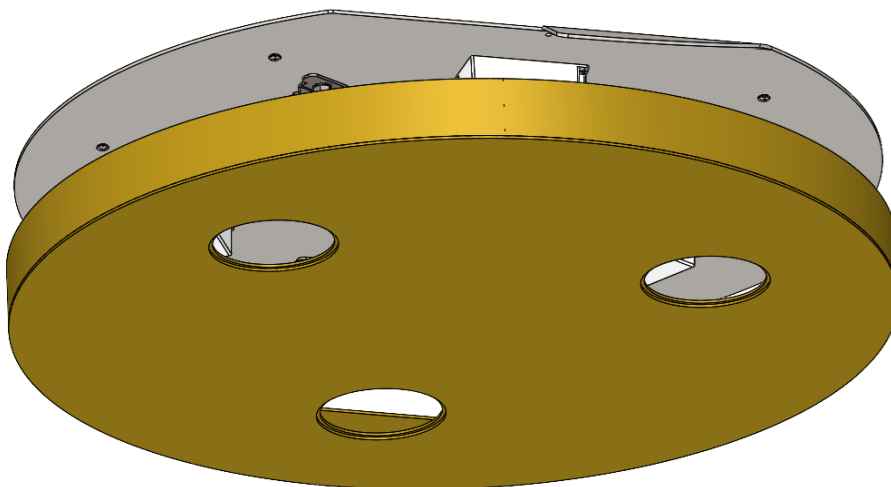
CAUTION: Turn off power at the circuit breaker prior to installing the fixture

1. Carefully remove fixture from packaging. Do not use a knife or other sharp tool, as this may cause scratching or other damage to the fixture and its components
2. Using appropriate ceiling anchors, hang ceiling mount disk directly to ceiling j-box using 8-32 screws. The secondary anchors provided may not be suitable for the job installation, and the installer should always make the judgement call on the best anchors to use for the ceiling type.

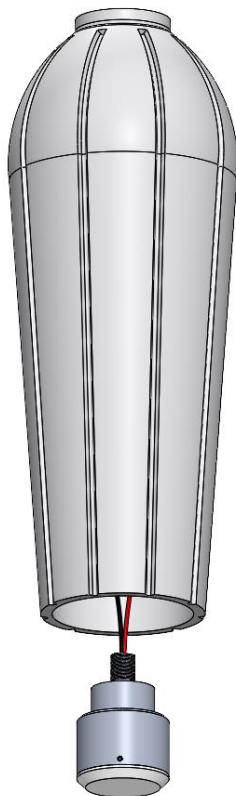


3. With ceiling mount disk affixed to the ceiling, make wire connections. Connect white driver wire to ceiling neutral wire (typically white). Connect the black driver wire to ceiling hot wire (typically black). Connect ground wire to ceiling ground wire or screw. For those using 0-10V dimming, connect the purple and pink wires to the ceiling dimming wires (purple/pink). For basic phase-dimming on an ELV or Triac style dimmer, simply cap off the purple and pink wires which need not be used.

4. Attach the main decorative canopy onto ceiling disk. The canopy is intended to be lifted and rotated into position over the bent flanges on the ceiling disk. The canopy will not be fully tight after this step.



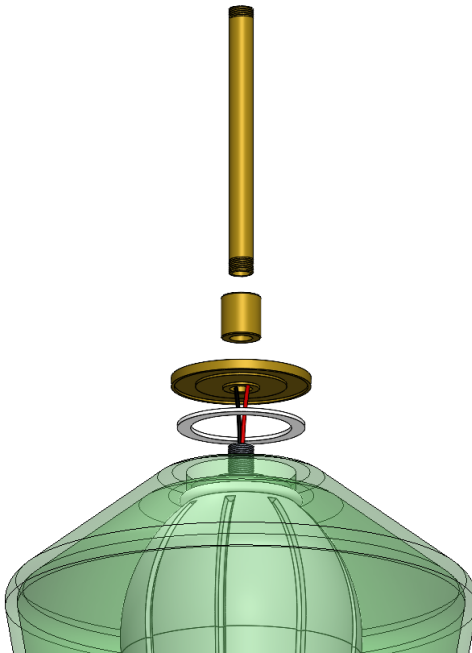
5. Begin assembly of the shade assemblies. Slide the wired heatsink through the bottom of the slender, inner glass shade. Gently pull wiring out the top hole.



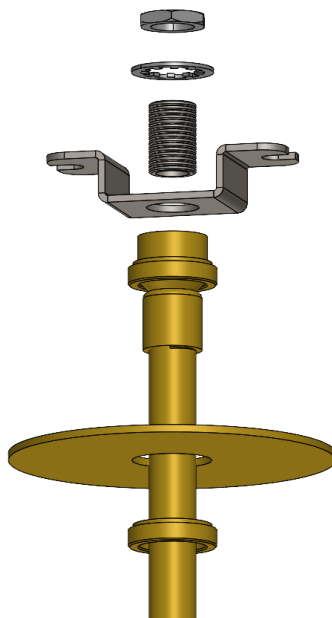
6. Place **silicone O-ring** over top collar on inner glass shade. Gently lower larger, outer glass shade onto lower shade. Pull wiring through hole. Do not place glass on glass without the padded O-ring in between.



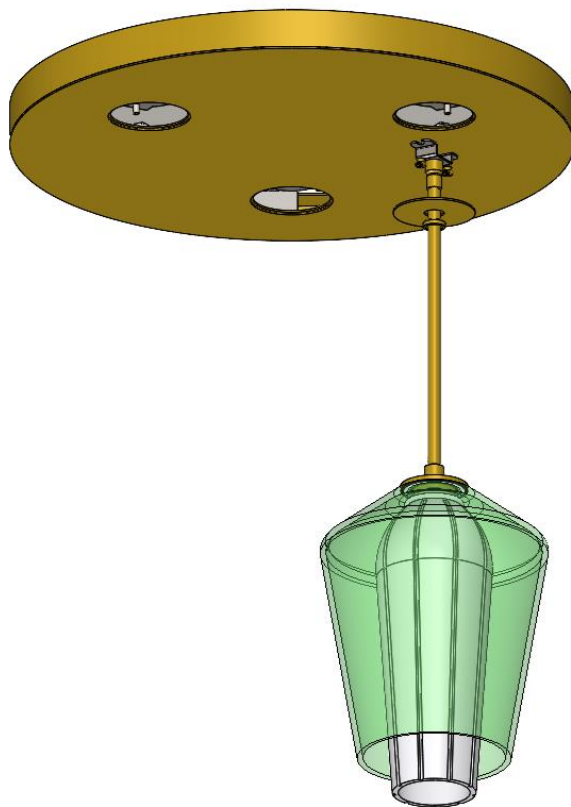
7. Place nylon washer on top of large shade. Thread heavy brass disk directly to threaded heatsink shaft. Thread brass coupling and stem onto shaft above heavy disk.



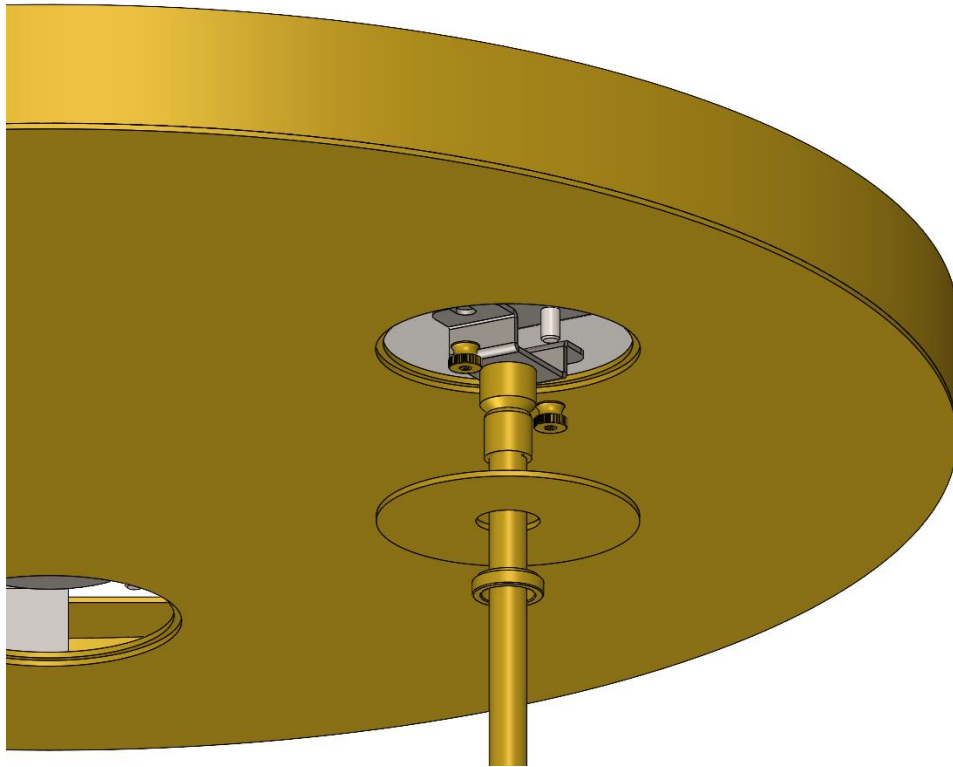
8. At top of stem, place the swivel aligner. Unthread the collar on the swivel so it drops down on the stem. Slide thin disk over stem. Secure hang bracket to top of stem using a nipple, lock washer, and nut. Wiring not shown.



9. With main stem and shade assembled, carefully lift assembly near canopy hole.



10. Feed wire from fixture assembly to canopy driver wiring. Use provided connectors to join red (+) LED wire to red (+) driver wire. Join black (-) LED wire to black (-) driver wire.
11. Tuck connections into canopy hole. Lift fixture assembly and secure bracket over studs on canopy plate. Secure with brass thumb knobs.



12. Slide 3" cover disk up stem and over hole in the canopy. Hold in place by threading the collar directly onto the swivel aligner. The securing of these disks will cause the main canopy to pull snug to the ceiling.
13. Repeat process for the remaining two fixture assemblies.
14. Restore power to the circuit.